

BMJ Open Methodological advantages and disadvantages of parallel and crossover randomised clinical trials on methylphenidate for attention deficit hyperactivity disorder: a systematic review and meta-analyses

Helle B Krogh,¹ Ole Jakob Storebø,¹ Erlend Faltinsen,¹ Adnan Todorovac,¹ Erica Ydedahl-Jensen,¹ Frederik Løgstrup Magnusson,¹ Mathilde Holmskov,¹ Trine Gerner,¹ Christian Gluud,² Erik Simonsen¹

To cite: Krogh HB, Storebø OJ, Faltinsen E, *et al.* Methodological advantages and disadvantages of parallel and crossover randomised clinical trials on methylphenidate for attention deficit hyperactivity disorder: a systematic review and meta-analyses. *BMJ Open* 2019;**9**:e026478. doi:10.1136/bmjopen-2018-026478

► Prepublication history and additional material for this paper are available online. To view these files, please visit the journal online (<http://dx.doi.org/10.1136/bmjopen-2018-026478>).

Received 6 September 2018
Revised 18 December 2018
Accepted 14 January 2019



© Author(s) (or their employer(s)) 2019. Re-use permitted under CC BY-NC. No commercial re-use. See rights and permissions. Published by BMJ.

¹Psychiatric Department, Psychiatric Research Unit, Slagelse, 4200, Denmark
²Center for Clinical Intervention Research, Copenhagen Trial Unit (CTU), Copenhagen Ø, Denmark

Correspondence to

Dr Helle B Krogh;
hellebkrogh@gmail.com

ABSTRACT

Objective To assess the methodological advantages and disadvantages of parallel and crossover designs in randomised clinical trials on methylphenidate for children and adolescents with attention deficit hyperactivity disorder (ADHD).

Design Secondary analyses of a Cochrane systematic review.

Setting and participants We searched relevant databases up to March 2015 and included data from parallel and crossover randomised trials assessing children and adolescents up to 18 years with ADHD.

Interventions Methylphenidate compared with placebo or no-treatment interventions.

Primary and secondary outcomes The primary outcomes were teacher-rated ADHD symptoms and serious adverse events. The secondary outcomes were non-serious adverse events.

Results We included 38 parallel trials (n=5111) and 147 crossover trials (n=7134). When comparing methylphenidate with placebo or no-treatment on ADHD symptoms, we found no differences between the end of parallel trials and the first-period from crossover trials ($X^2=1.06$, $df=1$, $p=0.30$, $I^2=5.5\%$). We also found no differences when combining the end of first-period crossover trials with the end of parallel trials and comparing them to the end of last-period crossover trials ($X^2=3.25$, $df=1$, $p=0.07$, $I^2=69.2\%$). We found no differences in serious and non-serious adverse events, and no risk of period and carryover effects. However, only two trials contributed data to the latter analyses.

Conclusions Both parallel and crossover trials seem suitable for investigating methylphenidate in children and adolescents with ADHD, with comparable estimates on ADHD symptom severity and adverse events. However, parallel trials might still offer ethical and statistical advantages over crossover trials.

INTRODUCTION

Attention deficit-hyperactivity disorder (ADHD), one of the most common mental disorders among children and adolescents, is characterised by inattention,

Strengths and limitations of this study

- Study strengths include publishing a protocol in accordance with The Cochrane Collaboration guidelines, conducting a broad and comprehensive literature search, and assessing both published and unpublished data.
- The Food and Drug Administration and European Medicine Agency databases were not searched for unpublished data.
- The analysis comparing the end of first-period and last-period crossover trials included two trials only and might suffer from low power and spurious data.
- Methylphenidate gives rise to several easily recognisable adverse events, which may lead to loss of blinding and influence symptom ratings.
- A total of 179 trials (97%) were considered at high risk of bias, leading to decreased confidence in the effect estimates.

hyperactivity and impulsivity.^{1 2} The first-choice pharmaceutical treatment for ADHD is methylphenidate,³ a central nervous system stimulant exerting agonistic effects on dopamine and norepinephrine in the brain-stem and neocortex.⁴ We previously conducted a Cochrane systematic review on methylphenidate for children and adolescents with ADHD and found significant improvements on ADHD symptoms, general behaviour and quality of life, but the included randomised clinical trials (RCTs) suffered from low to very low evidence certainty.⁵

Crossover designs were about four times more frequent than parallel designs in the review.⁵ Clinical trials with crossover designs allocate participants to different interventions

over two or more time periods, whereas in parallel trials, participants are randomised to the same intervention over a single period of time.⁶ Crossover trials may offer more precise estimates of intervention effects compared with a parallel trial because they would remove any biological and methodological variation. Hence, less participants need to be randomised to observe intervention effects.⁷ Importantly, the first period of a crossover trial can be viewed as independent and identical to a parallel trial.⁷⁻⁹ Crossover trials typically last longer (which may inflate attrition rates) and involve fewer participants than parallel trials.^{7 8 10} However, since the participants are allocated to different interventions over time, it makes it potentially challenging to determine the causality.¹¹ Moreover, the crossover design is only suitable for a condition that is stable, when intervention effects are short-lived, and do not cure the condition.⁷ Parallel trials are versatile, simple and easy to incorporate into meta-analyses compared with crossover trials, but they usually require larger sample sizes.^{7 12}

The optimal way to incorporate data from crossover trials into meta-analyses is to retrieve data from all time periods,^{13 14} but such data are often unavailable. Another option is to impute missing data and adjust for 'unit of analysis errors' by conducting covariate analyses (for continuous data) or adjust for the variance to account for the correlation coefficient (dichotomous data).^{6 13 14} A third option is to ignore the crossover design, and treat all time periods as parallel designs. However, this introduces the possibility for 'unit of analysis errors' as the same patients receive both interventions.¹⁵ The data are therefore not independent, which is typically required for standard statistical methods.¹³

Crossover trials may also be biased by carryover and period effects. Carryover effects occur when an intervention effect during one time period is carried over and interferes with a subsequent period.^{6 7 9 12 14} This can be controlled for by introducing washout periods between intervention periods, causing the effects of the initial intervention to dissipate.^{9 16 17} Period effects occur when treatment effects differ between time periods in crossover trials,^{16 17} but because randomisation procedures are thought to diminish period effects, they are usually not as serious as carryover effects.^{7 17} Carryover effects are generally less suspected in crossover trials on methylphenidate because of its short pharmacokinetic half-life of 1.5 to 3 hours, depending on the drug formulation.¹⁸⁻²¹ However, poor reporting of carryover and period effects and the lack of rationale for using crossover designs, is widespread and problematic.^{10 14 17 22}

The aim of this study is to investigate the advantages and disadvantages of parallel and crossover trials on methylphenidate for ADHD, and to assess the risk of carryover and period effects when using crossover designs. The study rationale was to determine whether crossover trials are suitable for assessing the benefits and harms of methylphenidate for ADHD relative to parallel trials, and whether authors in the field should be more

cognisant of potential differences between the two trial designs.

METHODS

Data source

The data was derived from our Cochrane systematic review on the efficacy and adverse events of methylphenidate in children and adolescents with ADHD.⁵ The methods and design adhered to The Cochrane Collaboration standards for systematic review production.²³ The protocol was published in The Cochrane Library.²⁴

Patient involvement

No patients were involved in conducting this study.

Study selection

We included parallel and crossover RCTs on methylphenidate for children and adolescents with ADHD. Methylphenidate compared with placebo or no-treatment were to be administered regardless of dose and medical treatment regimen. We allowed co-interventions if the comparison groups received them simultaneously. All trials were included irrespective of language, publication type and publication status.

Inclusion criteria

We included children and adolescents, aged 18 or less, with a formal diagnosis of ADHD according to the Diagnostic and Statistical Manual of Mental Disorders (DSM-III, DSM-III-R and DSM-IV, DSM-V)^{1 25-28} or the International Classification of Diseases (ICD-9, ICD-10).² The participants were included regardless of comorbid conditions. At least 75% were required to have normal intellectual capacity (IQ>70), and 75% had to be under 18 years of age, with a mean of 18 or less.

We contacted authors of crossover trials to obtain data for all time periods if the trial report lacked information. We assessed study quality and risk of bias according to Grades of Recommendation, Assessment, Development and Evaluation standards and the Cochrane guidelines.^{5 23 29} For risk of bias, each study was assigned one of three categories: low risk, unclear risk or high risk of bias. Data was entered into Review Manager, V.5.3.³⁰

Search strategy

We searched CENTRAL, MEDLINE, Embase, CINAHL, PsycINFO, ClinicalTrials.gov, iCTRP and ISI CPCI up to March 2015. For CENTRAL, MEDLINE, Embase and PsycINFO, two different search strategies were used: one for efficacy and one for adverse events. To overcome the risk of poor indexing and abstracting, individual brand names were listed within the search strategies. We also contacted experts in the field and pharmaceutical companies for published and unpublished data, and we checked review articles for additional relevant studies. Relevant articles in non-English languages were translated. Further details on the data sources and search criteria are available in the Cochrane systematic review.⁵

Outcomes and comparisons

The primary outcomes were ADHD symptoms (ie, teacher, parent and observer-rated) and serious adverse events. We chose the teacher ratings as our primary outcome since ADHD symptoms are more readily detectable in the school setting.³¹ The secondary outcomes were non-serious adverse events.⁵ We first compared the end of parallel trials to the end of first-period of crossover trials. If no significant differences were found, we pooled the first-period of crossover trials with the parallel trials and compared these data to the end-period of the crossover trials. First-period and end-period crossover trials were compared to assess the risk of carryover and period effects.

Statistical analyses

We summarised dichotomous data as risk ratios (RR) with 95% CI, and if trials used the same continuous outcome, we summarised the data as mean group differences with 95% CI. For different continuous outcome measures, we used standardised mean differences with 95% CI. We applied both fixed effects and random effects models. If we were not able to retrieve the end of the first-period crossover data, we created groups of crossover trials with the end of the last-period data only. We originally intended to adjust for unit-of-analysis errors in crossover trials by conducting a covariate analysis for the continuous data, but the data were insufficient for this. For the dichotomous data, we were unable to adjust for the variance to account for the correlation coefficient due to insufficient data. We could not estimate the RR using the marginal probabilities and we therefore used the end of the last-period data for calculating the RR.³²

We presented the results in forest plots, and χ^2 and I^2 were applied to test for statistical heterogeneity. χ^2 assesses whether observed differences in the results are compatible with chance alone. χ^2 may have low power in meta-analyses of a few studies or small sample sizes and should therefore be interpreted with caution. I^2 describes the percentage of variability in the results that is caused by heterogeneity rather than sampling error (chance). Roughly speaking, $I^2 < 40\%$ might not be important, 30%–60% might represent moderate heterogeneity, 50%–90% might represent substantial heterogeneity and 75%–100%, considerable heterogeneity.²³

RESULTS

The search up to March 2015 identified 14431 initial records. After removal of duplicates and irrelevant articles by abstract screening, 1460 publications were assessed for full-text inclusion. Subsequently, 185 randomised trials from 449 reports were included, of which 38 were parallel trials (n=5111 participants) and 147 were crossover trials (n=7134 participants) (figure 1). Only five of our crossover trials provided data from the different periods of the trial, either described in the publication or acquired after our requests to the authors.^{21 33–36} One

trial had insufficient data for use in the meta-analyses. Lehmkuhl³⁶ was part of a larger study,³⁷ and data were acquired directly from HB Pharma (part of Medici). Of the five eligible trials, only two had data on teacher-rated ADHD symptoms.^{34 35}

Characteristics of included studies

We assessed 179 (97%) trials at high risk of bias and six (3%) at low risk of bias.⁵ However, these six could potentially have suffered from lack of blinding because of the common, easily recognisable adverse effects of methylphenidate.⁵ Most trials were from high-income countries, the boy to girl ratio was 5:1 and participant ages ranged from 3 to 21 years with an average of 9.7 years. The average trial duration was less than 2 months, with only four trials lasting longer than 6 months. The median duration of the 38 parallel-group trials was 49 days (range 1 to 425 days, mean 75) and for the 147 crossover trials it was a total 14 days (1 to 56 days, mean 16 days).

ADHD symptoms

Parallel trials compared with first-period crossover trials

The analysis on teacher-rated ADHD symptoms included only 19 trials (n=1601) (figure 2). No significant differences were found between the end of the parallel trials and the end of the first-period of crossover trials ($\chi^2=1.06$, df=1, p=0.30, $I^2=5.5\%$). Moreover, no differences were found for independent assessor-rated ADHD symptoms ($\chi^2=0.30$, df=1, p=0.58, $I^2=0\%$) or parent-rated ADHD symptoms ($\chi^2=0.00$, df=1, p=0.96, $I^2=0\%$) in these two groups of trials.

Parallel trials plus first-period crossover trials compared with end-period crossover trials

The analysis of teacher-rated ADHD symptoms included 75 trials (n=6247) (figure 3). No significant differences were found between the end of the parallel group trials plus the end of the first period of the crossover trials and end of the last period of the crossover trials ($X^2=3.25$, df=1, p=0.07, $I^2=69.2\%$). Also, no differences were found for parent ratings ($X^2=1.58$, df=1, p=0.21, $I^2=36.6\%$) in these two groups of trials. However, these groups of trials differed regarding observer ratings ($\chi^2=4.23$, df=1, p=0.04, $I^2=76.4$), with methylphenidate exerting larger effects in the end of the last period of the crossover trials.

First-period compared with end-period crossover trials

The analysis of teacher-rated ADHD symptoms included only two trials (n=95 participants) (figure 4). The effect estimates as well as the 95% CI are comparable and do not indicate any difference between subgroups. There were insufficient data on parent ratings and independent-assessor ratings to conduct independent analyses.

Serious adverse events

Parallel trials compared with end-period crossover trials

One analysis compared the end of the parallel-group to the end of the last period of the crossover trials on serious adverse events (figure 5). The analysis with 17 trials found

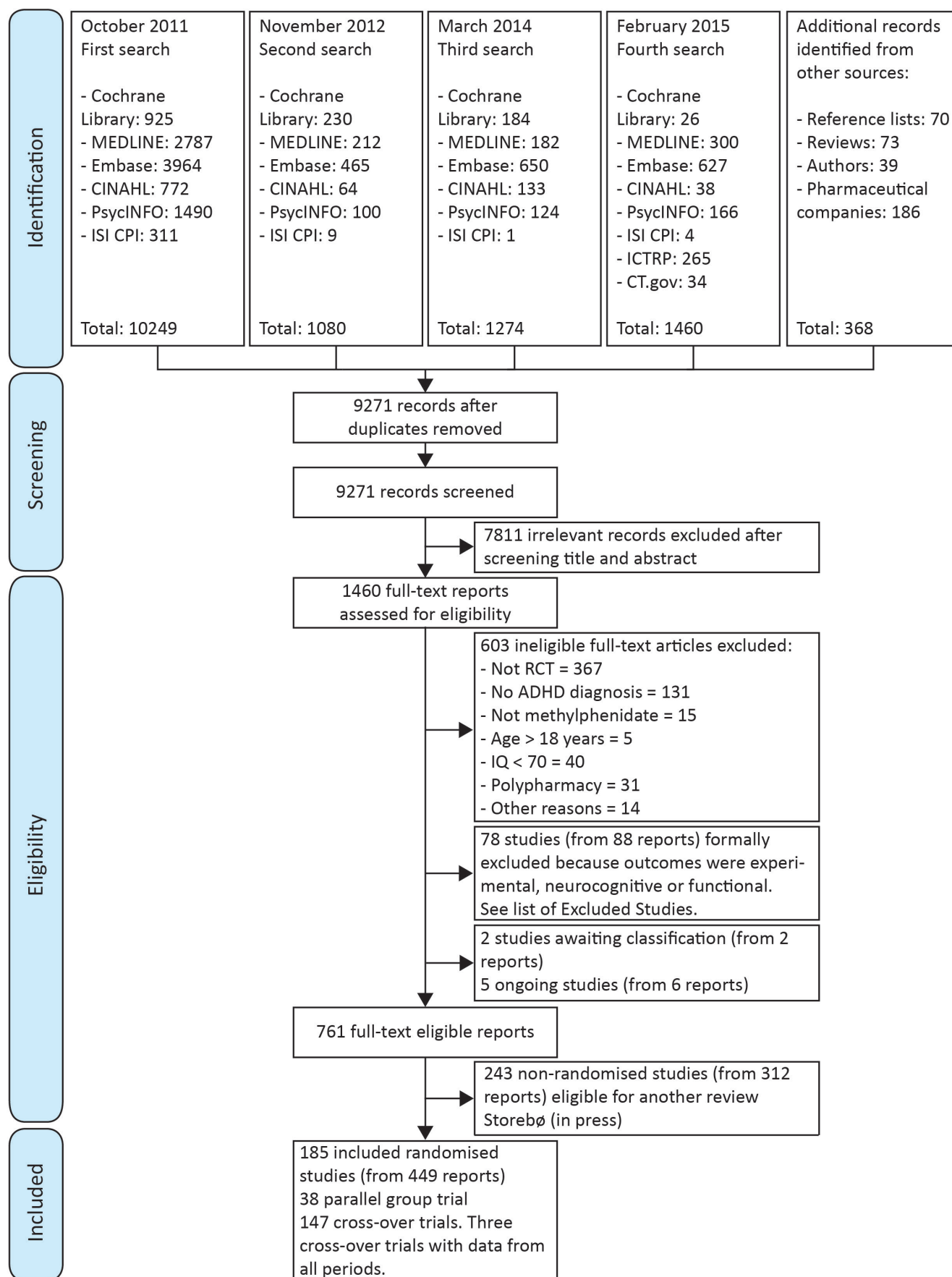


Figure 1 Preferred Reporting Items for Systematic Reviews and Meta-Analyses flowchart. ADHD, attention deficit hyperactivity disorder; RCT, randomised clinical trials.

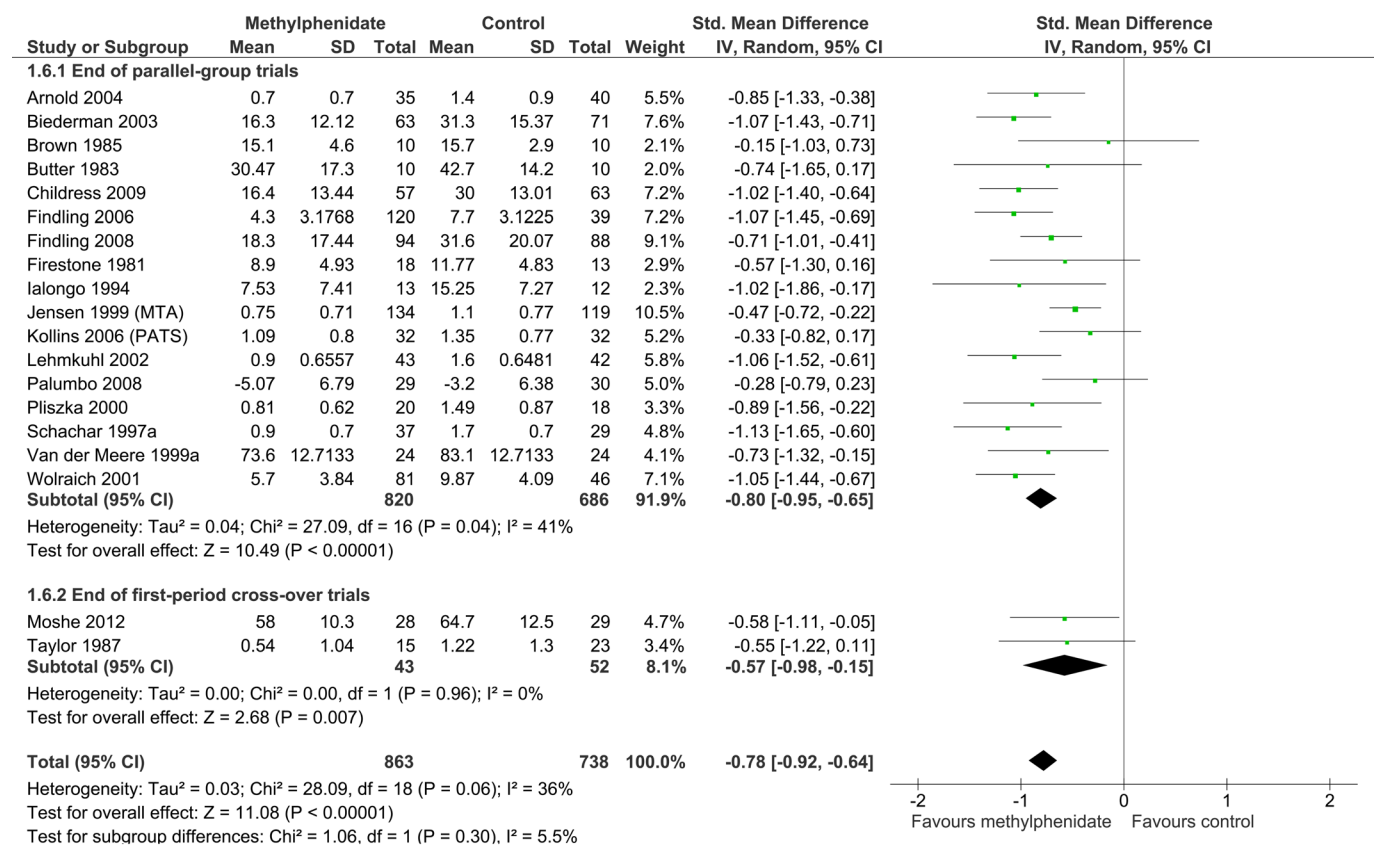


Figure 2 Data from the end of the parallel trials compared with the end of the first period of the crossover trials on the effects of methylphenidate compared with placebo or no intervention on teacher-rated attention deficit hyperactivity disorder symptoms.

no significant differences between the two groups of trials ($X^2=0.31$, $df=1$, $p=0.58$, $I^2=0\%$).

Non-serious adverse events

Parallel trials compared with the first-period crossover trials

One analysis compared parallel-group trials to first-period crossover trials. The analysis included 20 parallel-group trials and one crossover trial with data from first period (online supplementary file 1). No significant differences were found between the two groups of trials ($\chi^2=1.45$, $df=1$, $p=0.23$, $I^2=31.1\%$).

Parallel plus first-period crossover trials compared with end-period crossover trials

One analysis compared parallel-group plus end of first-period crossover trials to the end of last period of crossover trials for non-serious adverse events (online supplementary file 2). The analysis with data from 42 trials found no significant differences between the two groups of trials ($\chi^2=0.06$, $df=1$, $p=0.80$, $I^2=0\%$).

First-period compared with end-period crossover trials

One analysis compared end of first-period crossover trials to end of last period crossover trials – one study was included (online supplementary file 3). The effect estimates as well as the 95% are comparable and do not indicate any difference between subgroups.

Subgroup analysis

We conducted a subgroup analysis investigating the impact of bias. We found that the intervention effect did not vary according to risk of bias (test for subgroup differences: $\chi^2=2.43$, $df=1$, $p=0.12$, $I^2=58.9\%$). However, it is likely that the trials initially judged to be at low risk of bias are in fact trials at high risk of bias because methylphenidate gives rise to various prevalent and easily recognisable adverse events, leading to potential loss of blinding and biased symptom ratings. This may result in overestimations of benefits and underestimations of harms.^{38–40}

In the original review,⁵ we conducted several subgroup analyses, for example, types of scales, duration of treatment and medication status. These were not deemed relevant for this publication. For more information on these, we refer to the original review.

DISCUSSION

We aimed to investigate the methodological advantages and disadvantages of parallel and crossover designs of RCTs on methylphenidate for children and adolescents with ADHD. The study is important because RCTs with children and adolescents are challenging to conduct and often raise ethical concerns. Moreover, both parallel and crossover designs are used to investigate methylphenidate

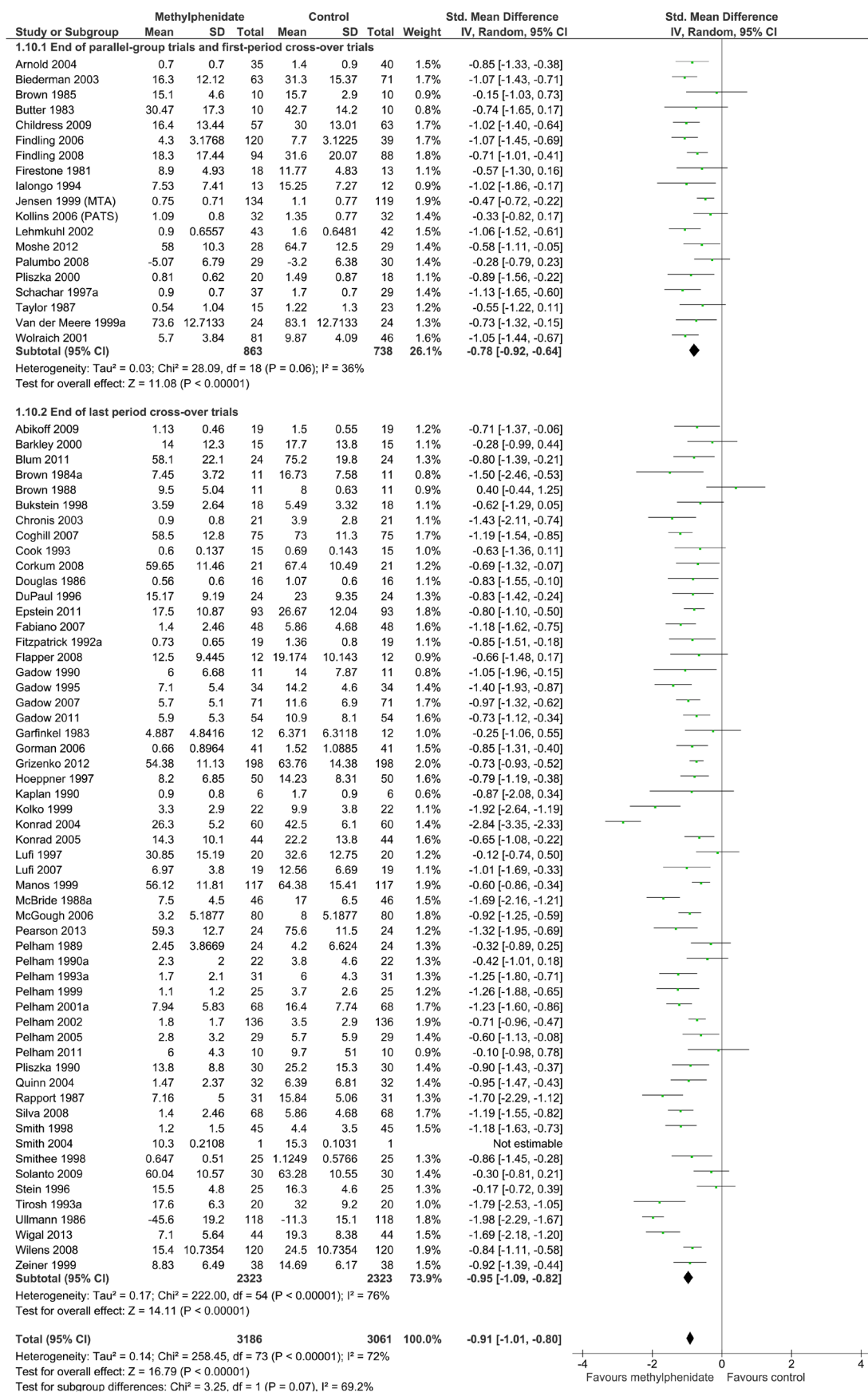


Figure 3 Data from the end of the parallel trials plus the end of the first period of the crossover trials compared with data from the end of the last period of the crossover trials on the effects of methylphenidate versus placebo or no intervention on teacher-rated attention deficit hyperactivity disorder symptoms.

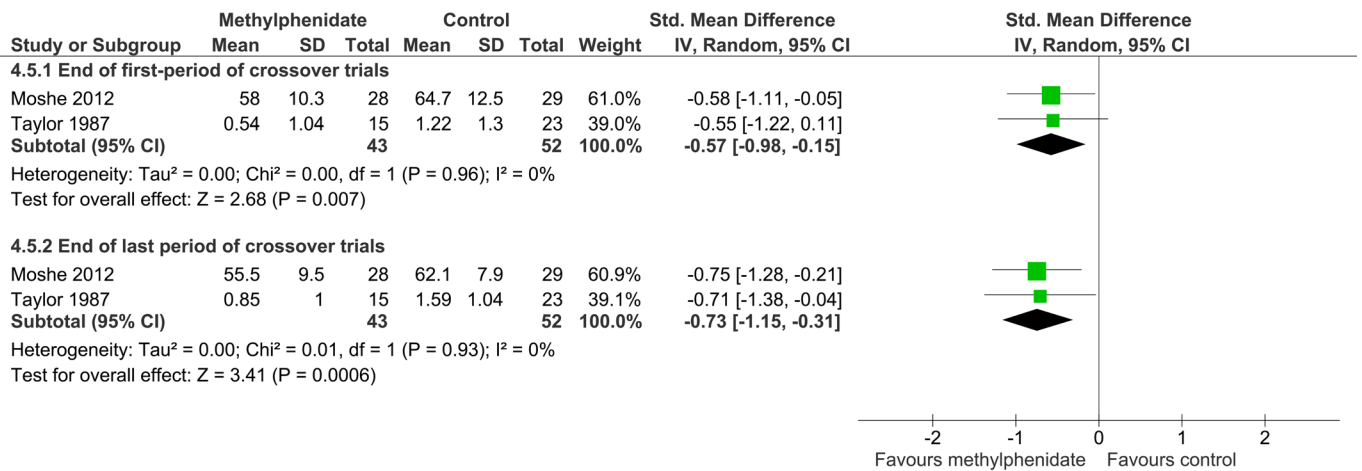


Figure 4 Data from the end of the first period compared with data from the end of the last period of crossover trials on the effects of methylphenidate versus placebo or no intervention on teacher-rated attention deficit hyperactivity disorder symptoms.

for children and adolescents, without anyone, to our knowledge, having investigated specifically whether both types of designs are suitable. [table 1](#) summarises potential advantages and disadvantages of parallel and crossover designs based on the findings from this study and previous literature.

For teacher-rated ADHD symptoms, we found no significant differences when comparing the end of the first period of the crossover trials to that of the parallel trials, the end of the first period to the end of the last period of crossover trials, or when comparing the end of the first period of the crossover trials plus that of the parallel group

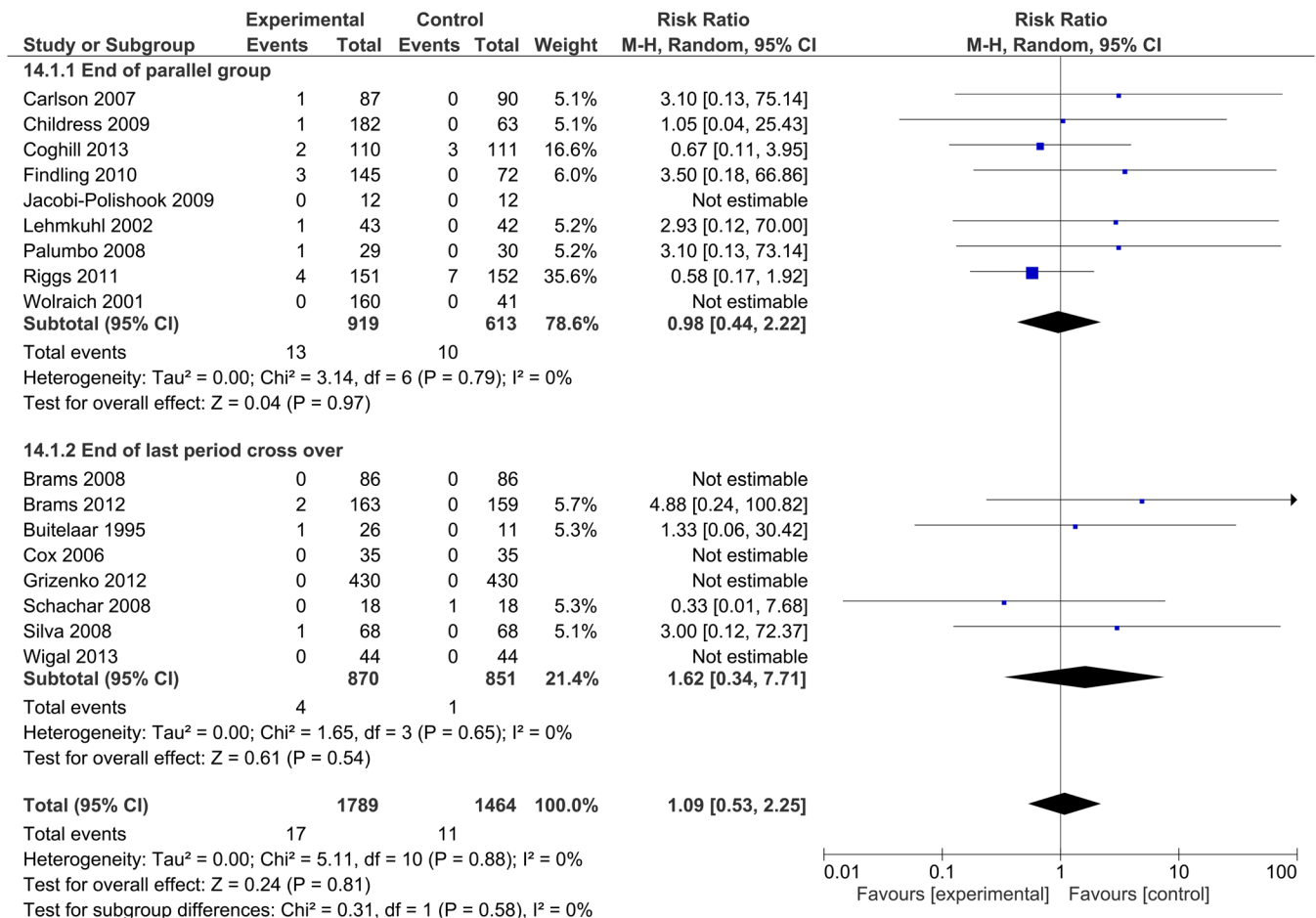


Figure 5 Data from parallel trials compared with data from end of the last period of crossover trials on serious adverse events.

Table 1 Methodological advantages and disadvantages with crossover and parallel randomised designs when investigating methylphenidate for children and adolescents with attention deficit hyperactivity disorder. Based on previous literature and the present findings

	Advantages	Disadvantages
Crossover designs	<p>Suitable for stable conditions, when interventions are short-lived and do not cure the condition (eg, methylphenidate for ADHD).</p> <p>Crossover trials did not alter effect estimates relative to parallel trials in the present study with the exception of one observer-rated analysis of ADHD symptoms.</p> <p>Commonly reported biases with crossover studies, such as period and carryover effects, were not documented.</p> <p>Crossover trials need fewer participants than parallel trials to achieve sufficient power, which may decrease the use of participant and resource consumption.</p> <p>This study did not document any unit of analysis errors from using end-of-trial data from crossover trials in meta-analyses even after ignoring the within-patient correlations.</p>	<p>The present study was constrained by low evidence quality. Therefore, one cannot state for certain whether crossover trials on methylphenidate for ADHD are free of methodological biases relative to parallel trials.</p> <p>Crossover trials often last longer than parallel trials, which may increase overall attrition rates.</p> <p>Data from all time periods in crossover trials are often unavailable, and because participants switch interventions, causality of adverse events and effects may be difficult to determine in some circumstances.</p> <p>There may be undocumented adverse events associated with exposing participants to multiple interventions in a trial.</p>
Parallel designs	<p>Parallel trials are versatile, simple and easy to incorporate into meta-analyses when compared with crossover trials.</p> <p>By including more participants, parallel trials will have higher external validity regarding benefits and harms compared with crossover trials.</p> <p>Researchers do not need to address issues concerning unit of analysis errors, period effects and carryover effects or washout periods between interventions.</p>	<p>Parallel designs usually require larger sample sizes than crossover studies, which may increase financial costs.</p>

trials to the end of the last period of the crossover trials. We also found no significant differences when looking at parent ratings for the abovementioned analyses. However, we found significant differences in the observer-rated end-of-first-period crossover trials compared with parallel trials, with methylphenidate exerting larger effects in the end of the last-period of crossover trials.

Regarding our analyses on serious adverse events, we found no significant differences when comparing parallel trials with the last period of crossover trials, and no indications of period and carryover effects were found.

Only 10 out of the 147 included crossover trials (7%) addressed or mentioned the issue of carryover effects, which is fewer than previous studies have reported.^{6 17} We found no risk of carryover and period effects when comparing the end of the first period to that of the last period of crossover trials (figure 4), but this analysis was based on two trials only. When comparing the end of the parallel trials plus the end of the first period of crossover trials to the end of the last period of crossover trials for ADHD symptoms, we found no significant subgroup differences either (figure 3) which further decreases the likelihood of carryover and period effects in the crossover trials. Notably, this analysis had heterogeneity of $I^2=69.2\%$, indicating substantial heterogeneity between the groups of trials.

When meta-analyses incorporate crossover data, the unit of analysis errors may bias the results.¹⁵ The insignificant subgroup differences between the end of

the parallel trials and the last period of the crossover trials suggest, however, that such errors were not major. The majority of the crossover trials presented only end-of-last period data, which undermines their interpretability and generalisability. This also underlines a larger problem with incorporating crossover trials in meta-analyses: data on within-individual comparison of treatments from paired analyses and data from multiple time periods are often unavailable to review authors.¹³ We only received few positive responses when asking for missing data.

A washout period between interventions is recommended when using crossover designs to reduce period and carryover effects.⁹ However, only 27 out of the 147 crossover trials (19%) included a washout period, lasting between 1 to 14 days. In total, 79 (56%) of the crossover trials did not include a washout period, and in the remaining 41 (29%), it was unclear whether washout periods were used. Of the trials with a washout period, only 15 (10%) provided arguments for its necessity. However, the results from this study indicate that the lack of reporting may have contributed to less bias than one might expect, possibly because of the short half-life and brief effects of methylphenidate.

Strengths and limitations

This study has several strengths. A protocol was published following The Cochrane Collaboration guidelines,²³ a broad and comprehensive literature search was conducted, and we included both published and

unpublished data. Review authors worked independently in pairs of two, and all data from both parallel and crossover trials were analysed in accordance with the Cochrane Handbook.²³ Furthermore, several of the analyses that compared parallel trials to crossover trials included over 1000 participants, which may have increased statistical power and decreased the risk of type II errors.

Some limitations should also be highlighted. First, the Food and Drug Administration and European Medicine Agency databases were not searched for unpublished data. Second, the analysis comparing first-period and last-period crossover trials included two trials only.

The best way to analyse intervention effects in crossover trials is to conduct paired analyses, and the best way to investigate the carryover effect and period effect is to look at the within-trial data. Unfortunately, the reporting of crossover trials were very variable, and the data required to include paired analysis in meta-analysis were not available to us. We believe that both period effect and carryover effect, as well as unit of analysis error (error due to using end of period data as these were independent data) would have affected the estimates and showed significant group differences between the parallel group and the crossover trials investigating the same interventions for children and adolescents with ADHD. When we, in our first analysis, compared the end of the parallel group trials and the end of the first period of crossover trials with the end of the last period of crossover trials (using end-of-period data as if these were independent data which they, of course, are not) one would expect significant subgroup differences between the groups due to unit of analysis error (error due to using end of period data as if these were independent data) as well as due to carryover effect. When we, in one of the other analysis, compared end-of-first period crossover trials with the end-of-the-last-period crossover trials, one would also expect differences had there been any carryover effect from the methylphenidate treatment during the first period to the placebo treatment during the second period affecting the effect of the placebo treatment.

We also carried out a search for additional articles comparing the use of the two designs, but no articles describing methylphenidate or similar drugs were found. Other areas where the choice of design has been discussed include antiepileptic drugs, sleep research and infertility trials.^{7 8 41}

CONCLUSIONS

This study mostly found no signs of period effects or carryover effects in crossover trials assessing methylphenidate for children and adolescents with ADHD. Accordingly, crossover trials and parallel trials on methylphenidate for children and adolescents with ADHD seem to offer the same advantages and pose similar problems as described for these two designs in other therapeutic areas. Despite the insignificant results, crossover trial suitability for methylphenidate trials should still be questioned. It can

be harder to detect and analyse adverse events in crossover trials, especially the late onset adverse events, since the treatment periods are often short. The two types of designs also have clear methodological and practical differences concerning what statistical analyses to use, systematic bias, ethical concerns about exposing children or adolescents to multiple interventions, and financial costs.^{17 42} Authors of crossover trials ought to report more comprehensively the data for end of all trial periods. Review authors should know how to incorporate the widely used crossover design into meta-analyses, in order not to lose valuable data.

Acknowledgements The authors thank Maria Skoog, Susanne Rosendal, Camilla Groth, Carlos R. Moreira-Maia, Donna Gillies, Kirsten Buch Rasmussen, Dorothy Gauci, Morris Zwi, Richard Kirubakaran and Bente Forsbøl for their collaboration during the conduct of the systematic review. We thank Jørn Wetterslev for helpful discussions on the analytic strategy during the preparation of the manuscript.

Contributors OJS, ES, and CG had the idea for the study. OJS, HBK, EY-J, CG and EF performed the analyses. OJS, ES, EF, TG, EY-J, HBK, FLM and MH performed data curation. HBK wrote multiple drafts including the final version and retrieved relevant literature. TG, MH, FLM, EY-J, AT, OJS, CG, ES and EF edited, commented, advised on the manuscript. All authors approved of the final version.

Funding This study was supported by a grant from the Region Zealand Research Foundation, Denmark.

Competing interests None declared.

Patient consent for publication Not required.

Provenance and peer review Not commissioned; externally peer reviewed.

Data sharing statement The data from the original Cochrane study is openly available in the Cochrane Library, DOI: 10.1002/14651858.CD009885.pub2.

Open access This is an open access article distributed in accordance with the Creative Commons Attribution Non Commercial (CC BY-NC 4.0) license, which permits others to distribute, remix, adapt, build upon this work non-commercially, and license their derivative works on different terms, provided the original work is properly cited, appropriate credit is given, any changes made indicated, and the use is non-commercial. See: <http://creativecommons.org/licenses/by-nc/4.0/>.

REFERENCES

1. American Psychiatric Association. *Diagnostic and Statistical Manual of Mental Disorders (DSM-V)*. 5th Ed. Arlington, Va: American Psychiatric Association, 2013.
2. World Health Organization. *The ICD-10 classification of mental and behavioural disorders: clinical descriptions and diagnostic guidelines*, 2004.
3. NICE. Attention deficit hyperactivity disorder: diagnosis and management (NG87). National institute for health and care excellence. 2018 nice.org.uk/guidance/ng87 (accessed 13 Nov 2018).
4. Frölich J, Banaschewski T, Döpfner M, et al. An evaluation of the pharmacokinetics of methylphenidate for the treatment of attention-deficit/ hyperactivity disorder. *Expert Opin Drug Metab Toxicol* 2014;10:1169–83.
5. Storebø OJ, Ramstad E, Krogh HB, et al. Methylphenidate for children and adolescents with attention deficit hyperactivity disorder (ADHD). *Cochrane Database Syst Rev* 2015;48:CD009885.
6. Mills EJ, Chan A-W, Wu P, et al. Design, analysis, and presentation of crossover trials. *Trials* 2009;10:27.
7. Richens A. Proof of efficacy trials: cross-over versus parallel-group. *Epilepsy Res* 2001;45:43–7.
8. Berry CC, Moore P, Dimsdale JE. Assessing the trade-offs between crossover and parallel group designs in sleep research. *J Sleep Res* 2006;15:348–57.
9. Wellek S, Blettner M. On the proper use of the crossover design in clinical trials: part 18 of a series on evaluation of scientific publications. *Dtsch Arztebl Int* 2012;109:276–81.
10. Mills EJ, Chan AW, Wu P, et al. Design, analysis, and presentation of crossover trials. *Trials* 2009;10:27.

11. Yin M, Tan W. How to define treatment emergent adverse event (TEAE) in crossover clinical trials? In: *PharmaSUG - Paper IB03*, 2017.
12. Lathyrus DN, Trikalinos TA, Ioannidis JPA. Evidence from crossover trials: empirical evaluation and comparison against parallel arm trials. *Int J Epidemiol* 2007;36:422–30.
13. Elbourne DR, Altman DG, Higgins JP, et al. Meta-analyses involving cross-over trials: methodological issues. *Int J Epidemiol* 2002;31:140–9.
14. Curtin F, Elbourne D, Altman DG. Meta-analysis combining parallel and cross-over clinical trials. III: The issue of carry-over. *Stat Med* 2002;21:2161–73.
15. Higgins J, Deeks J, Altman D. Chapter 16: Special topics in statistics: In. *Cochrane Handbook for Systematic Reviews of Interventions Version 5.1.0 (updated March 2011)*: The Cochrane Collaboration, 2011.
16. Sedgwick P. Bias in randomised controlled trials: comparison of crossover group and parallel group designs. *BMJ* 2015;351:h4283.
17. Li T, Yu T, Hawkins BS, et al. Design, Analysis, and Reporting of Crossover Trials for Inclusion in a Meta-Analysis. *PLoS One* 2015;10:e0133023.
18. Kimko HC, Cross JT, Abernethy DR. Pharmacokinetics and clinical effectiveness of methylphenidate. *Clin Pharmacokinet* 1999;37:457–70.
19. Wolraich ML, Doffing MA. Pharmacokinetic considerations in the treatment of attention-deficit hyperactivity disorder with methylphenidate. *CNS Drugs* 2004;18:243–50.
20. Szobot CM, Rohde LA, Katz B, et al. A randomized crossover clinical study showing that methylphenidate-SODAS improves attention-deficit/hyperactivity disorder symptoms in adolescents with substance use disorder. *Braz J Med Biol Res* 2008;41:250–7.
21. Zeni CP, Tramontina S, Ketzer CR, et al. Methylphenidate combined with aripiprazole in children and adolescents with bipolar disorder and attention-deficit/hyperactivity disorder: a randomized crossover trial. *J Child Adolesc Psychopharmacol* 2009;19:553–61.
22. Nolan SJ, Hambleton I, Dwan K. The Use and Reporting of the Cross-Over Study Design in Clinical Trials and Systematic Reviews: A Systematic Assessment. *PLoS One* 2016;11:e0159014.
23. Higgins JPT, Green S. *Cochrane Handbook for Systematic Reviews of Interventions*. The Cochrane Collaboration. 2011 <http://training.cochrane.org/handbook>.
24. Storebø O, Rosendal S, Skoog M, et al. Methylphenidate for attention deficit hyperactivity disorder (ADHD) in children and adolescents (CD009885). *Cochrane Database Syst Rev* 2012.
25. American Psychiatric Association. *Diagnostic and Statistical Manual of Mental Disorders (DSM-III)*. 3rd Ed. DC: Washington American Psychiatric Association, 1980.
26. American Psychiatric Association. *Diagnostic and Statistical Manual of Mental Disorders (DSM-III-R)*. 3rd Ed. Washington DC: American Psychiatric Association, 1987.
27. American Psychiatric Association. *Diagnostic and Statistical Manual of Mental Disorders*. 4th Ed. Washington, D.C: American Psychiatric Association, 1994.
28. American Psychiatric Association. *Diagnostic and Statistical Manual of Mental Disorders (DSM-IV-TR)*. 4th Ed. DC: Washington American Psychiatric Publishing, 2000.
29. Guyatt G, Oxman AD, Akl EA, et al. GRADE guidelines: 1. Introduction-GRADE evidence profiles and summary of findings tables. *J Clin Epidemiol* 2011;64:383–94.
30. The Cochrane Collaboration. The Nordic Cochrane Centre. *Review Manager* 2014.
31. Hartman CA, Rhee SH, Willcutt EG, et al. Modeling rater disagreement for ADHD: are parents or teachers biased? *J Abnorm Child Psychol* 2007;35:536–42.
32. Becker MP, Balagtas CC. Marginal modeling of binary cross-over data. *Biometrics* 1993;49:997.
33. Gonzalez-Heydrich J, Whitney J, Waber D, et al. Adaptive phase I study of OROS methylphenidate treatment of attention deficit hyperactivity disorder with epilepsy. *Epilepsy Behav* 2010;18:229–37.
34. Moshe K, Karni A, Tirosh E. Anxiety and methylphenidate in attention deficit hyperactivity disorder: a double-blind placebo-drug trial. *Atten Defic Hyperact Disord* 2012;4:153–8.
35. Taylor E, Schachar R, Thorley G, et al. Which boys respond to stimulant medication? A controlled trial of methylphenidate in boys with disruptive behaviour. *Psychol Med* 1987;17:121–43.
36. Lehmkuhl G. Double-blind, non-inferiority trial investigating the duration of action of Medikinet-retard vs. immediate-release methylphenidate vs. placebo across the day in children with attention deficit hyperactivity disorder (ADHD). Integrated final report. Phase. Phase III, Project number: Medikinet-retard® (study no: trial 6520-9973-01).
37. Döpfner M, Gerber WD, Banaschewski T, et al. Comparative efficacy of once-a-day extended-release methylphenidate, two-times-daily immediate-release methylphenidate, and placebo in a laboratory school setting. *Eur Child Adolesc Psychiatry* 2004;13 Suppl 1:93–101.
38. Kjaergard LL, Villumsen J, Gluud C. Reported methodologic quality and discrepancies between large and small randomized trials in meta-analyses. *Ann Intern Med* 2001;135:982–9.
39. Savović J, Jones HE, Altman DG, et al. Influence of reported study design characteristics on intervention effect estimates from randomized, controlled trials. *Ann Intern Med* 2012;157:429–38.
40. Wood L, Egger M, Gluud LL, et al. Empirical evidence of bias in treatment effect estimates in controlled trials with different interventions and outcomes: meta-epidemiological study. *BMJ* 2008;336:601–5.
41. Rapport MD, Kofler MJ, Coiro MM, et al. Unexpected effects of methylphenidate in attention-deficit/hyperactivity disorder reflect decreases in core/secondary symptoms and physical complaints common to all children. *J Child Adolesc Psychopharmacol* 2008;18:237–47.
42. Senn SS. *Cross-over Trials in Clinical Research*. 2 edition. Chichester: Wiley, 2002.