

A pragmatic randomised controlled trial in primary care of the Camden Weight Loss (CAMWEL) programme

Kiran Nanchahal,¹ Tom Power,¹ Elizabeth Holdsworth,¹ Michelle Hession,¹ Annik Sorhaindo,¹ Ulla Griffiths,¹ Joy Townsend,¹ Nicki Thorogood,¹ David Haslam,² Anthony Kessel,^{1,3} Shah Ebrahim,¹ Mike Kenward,¹ Andrew Haines¹

To cite: Nanchahal K, Power T, Holdsworth E, *et al.* A pragmatic randomised controlled trial in primary care of the Camden weight loss (CAMWEL) programme. *BMJ Open* 2012;2:e000793. doi:10.1136/bmjopen-2011-000793

► Prepublication history for this paper is available online. To view these files please visit the journal online (<http://dx.doi.org/10.1136/bmjopen-2011-000793>).

All authors, external and internal, had full access to all the data (including statistical reports and tables) in the study and can take responsibility for the integrity of the data and the accuracy of the data analysis.

Received 20 December 2011
Accepted 30 March 2012

This final article is available for use under the terms of the Creative Commons Attribution Non-Commercial 2.0 Licence; see <http://bmjopen.bmj.com>

¹London School of Hygiene & Tropical Medicine, London, UK

²Watton Place Clinic, Watton-At-Stone, UK

³Health Protection Agency, London, UK

Correspondence to

Kiran Nanchahal; kiran.nanchahal@lshtm.ac.uk

ABSTRACT

Objectives: To evaluate effectiveness of a structured one-to-one behaviour change programme on weight loss in obese and overweight individuals.

Design: Randomised controlled trial.

Setting: 23 general practices in Camden, London.

Participants: 381 adults with body mass index ≥ 25 kg/m² randomly assigned to intervention (n=191) or control (n=190) group.

Interventions: A structured one-to-one programme, delivered over 14 visits during 12 months by trained advisors in three primary care centres compared with usual care in general practice.

Outcome measures: Changes in weight, per cent body fat, waist circumference, blood pressure and heart rate between baseline and 12 months.

Results: 217/381 (57.0%) participants were assessed at 12 months: missing values were imputed. The difference in mean weight change between the intervention and control groups was not statistically significant (0.70 kg (0.67 to 2.17, p=0.35)), although a higher proportion of the intervention group (32.7%) than the control group (20.4%) lost 5% or more of their baseline weight (OR: 1.80 (1.02 to 3.18, p=0.04)). The intervention group achieved a lower mean heart rate (mean difference 3.68 beats per minute (0.31 to 7.04, p=0.03)) than the control group. Participants in the intervention group reported higher satisfaction and more positive experiences of their care compared with the control group.

Conclusions: Although there is no significant difference in mean weight loss between the intervention and control groups, trained non-specialist advisors can deliver a structured programme and achieve clinically beneficial weight loss in some patients in primary care. The intervention group also reported a higher level of satisfaction with the support received. Primary care interventions are unlikely to be sufficient to tackle the obesity epidemic and effective population-wide measures are also necessary.

Clinical trial registration number: Trial registration Clinicaltrials.gov NCT00891943.

ARTICLE SUMMARY

Article focus

- Evaluated structured one-to-one weight management programme.
- Delivery by trained non-specialists.
- Primary care setting.

Key messages

- Clinically important level of weight loss achieved by higher proportion of participants in the intervention (33%) compared with the control group (20%).
- Intervention group reported higher level of satisfaction with support received.
- Primary care interventions are unlikely to be sufficient to tackle the obesity epidemic.

Strengths and limitations of this study

- Relatively low threshold of body mass index ≥ 25 for inclusion, with few exclusions, so wide applicability of findings.
- High loss to follow-up (43%), although similar to other studies in the area; used multiple imputation to counter any biases.

INTRODUCTION

Overweight and obesity are major public health problems,¹ representing the fifth leading cause of death in the world² and an increasing global challenge.³ Obesity has severe impacts on health, increasing the risk of type 2 diabetes, hypertension, some cancers, heart and liver disease.^{1 4 5} The Foresight Report⁶ estimated the National Health Service costs attributable to obesity in 2007 as £4.2 billion. In 2010, 68% of men and 58% of women in England were overweight or obese (body mass index (BMI) ≥ 25 kg/m²).⁷

Obesity is a chronic condition requiring lifelong management as weight loss is often regained.^{8 9} Achieving changes in behaviour is challenging,¹⁰ largely due to an inability to

maintain healthy eating and physical activity behaviours.¹¹ Modest weight loss (3%–9%) can prevent type 2 diabetes, improve fasting plasma glucose, blood pressure and lipids, and reduce antihypertensive medication.^{12–16} Most overweight patients would like help with weight management from their general practices,¹⁷ weight loss is feasible in the short term (3–12 months)^{18 19} and estimated to be cost saving to the NHS,²⁰ although few recall receiving weight control advice from a health professional.²¹

The aim of this study was to develop and evaluate the efficacy of an intervention programme with 12-month follow-up, for an ethnically diverse overweight/obese population recruited from general practices in a pragmatic randomised controlled trial (RCT) following the Medical Research Council framework for complex interventions.²² To our knowledge, there are currently no other published RCTs of one-to-one lifestyle interventions delivered in UK general practice to overweight/obese patients without comorbidities.

METHODS

Aims

The aims of the study were to assess, by means of a pragmatic parallel group RCT, the effects on anthropometric measures, health-related parameters and the sense of well-being of offering individualised weight management advice in primary care to overweight/obese people who wished to lose weight and to identify the key factors influencing the outcome of the intervention.

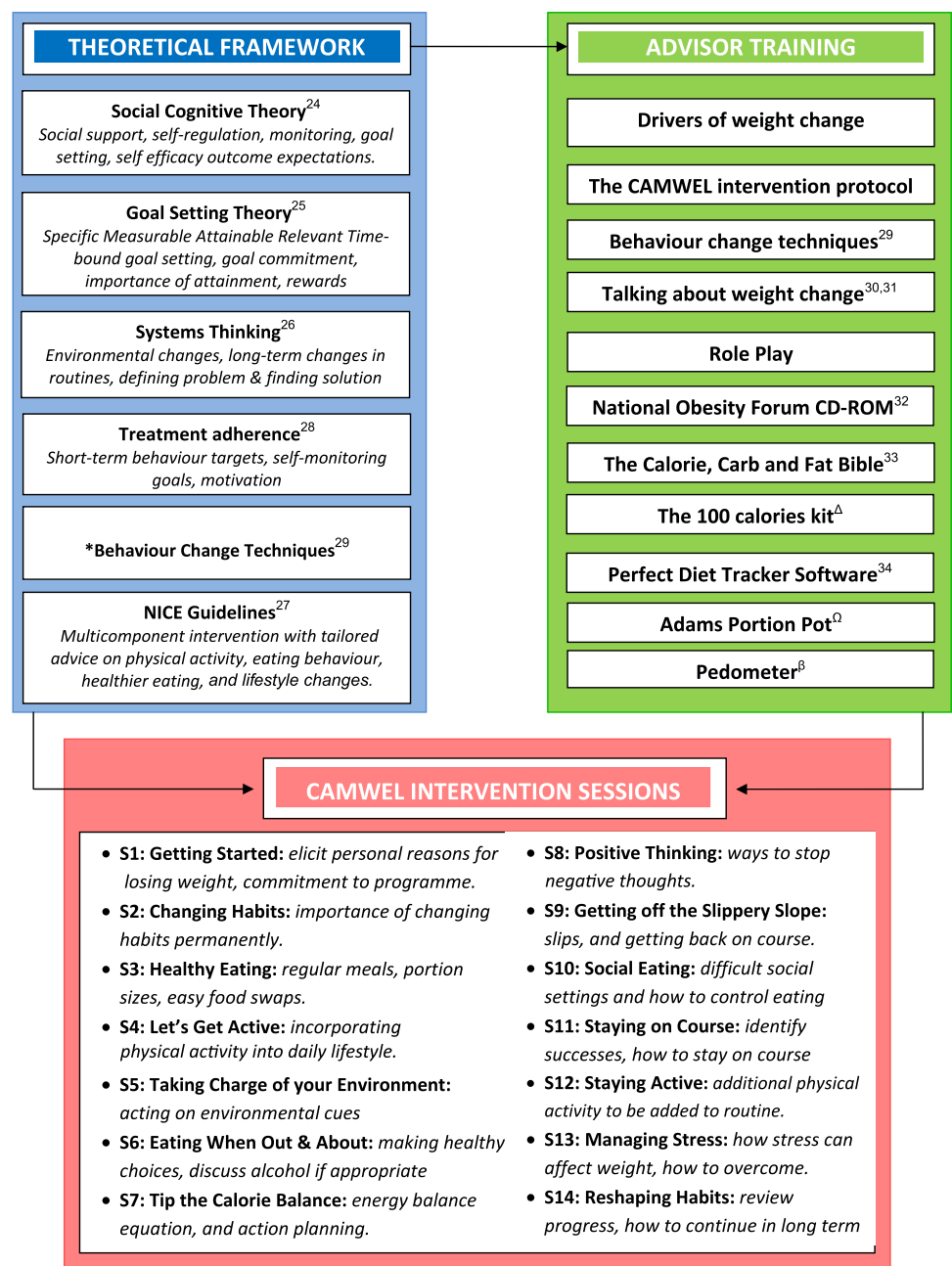
The primary outcome was the difference between the control and intervention groups in changes in body weight, and the secondary outcomes were differences in waist circumference, per cent body fat, blood pressure and heart rate from baseline to 12 months.

Interventions

The intervention combined evidence-based components recognised as essential for behaviour change and successful weight loss²³—healthier eating, increased physical activity incorporated into patients' everyday lifestyles, tailored goal setting, keeping food and activity diaries, self-monitoring, positive reinforcement, coping with lapses and high-risk situations and long-term support—derived from theoretical frameworks underpinning health promotion that have an emphasis on long-term changes in habits. This includes, for example, social cognitive theory,²⁴ which addresses diet and activity-related social support, outcome expectations, self-efficacy and self-regulation as well as diet and physical activity monitoring to assess changes over time and goal setting.²⁵ It also emphasised SMART (Specific, Measurable, Attainable, Relevant, Timely) goal setting, the relationship between goals and satisfaction and the achievement of goals and rewards, and systems thinking,²⁶ which focuses on environmental changes and stresses long-term changes in routines. The programme also incorporated NICE guidance on management of overweight and obesity²⁷ as well as evidence-based prin-

ciples of behaviour modification,²³ adherence to treatment²⁸ and results from our pilot study (figure 1).¹⁸ Six CAMWEL advisors were recruited from various occupational backgrounds including healthcare, in line with the NHS health trainers initiative.³⁵ The advisors received initial training over 2 days and further meetings with the research team every 3–4 months. Training of advisors included briefing on the obesity epidemic; food and physical activity behaviours associated with excess weight; principles of best practice and behaviour change strategies; evidence for what has been shown to work in weight loss management programmes; the use of motivational interviewing methods, counselling techniques and cognitive-behavioural therapy methods to provide tailored support for behaviour change; together with details of the study design and role play. All advisors were given a copy of the National Obesity Forum CD-Rom 'Managing Obesity in Primary Care'. Participants were invited to attend 30 min sessions with the advisor every fortnight for the first 12 weeks, every 3 weeks for 12 weeks and finally monthly for the next 12 weeks, making a total of 14 sessions. A script and schedule of topics for discussion were provided to the advisors for each session. The topics included personally agreed weight loss goals, eating and physical activity goals, exploration of motivations for losing weight, personal cues to reduce unhealthy eating and sedentary behaviour, support from family and friends, triggers associated with habits and routines, long-term benefits of small changes and the importance of scheduling and time management. A commercially available weight management software package (<http://www.perfect-diet-tracker.com>) was used to record and monitor participant progress and keep notes of each session by the advisors. The advisors were provided with access to a book giving the calorie content of foods available in the UK,³³ a kit including 100-calorie portions of various food items and Adams Food and Alcohol Portion Pots (<http://www.adamsportionpot.com>). The intervention participants were given pedometers and handouts associated with each session, including a tailored motivational booklet to encourage increased levels of physical activity and a book of walks in the local area specially prepared for the study (appendix 1). Further details are available from the corresponding author (KN).

There is no current comparator 'gold standard' treatment programme available for weight management in general practice. In this pragmatic trial of a complex intervention, we assess the benefit of the intervention compared with routine clinical practice. We provided a copy of the Quick reference NICE clinical guideline on Obesity to all participating general practitioners (GPs)²⁷ and asked control participants to contact their general practice to receive usual weight management care provided by the practice, which could include referral to a dietitian (<http://www.camden.nhs.uk/adult-weight-management-service.htm>), exercise on referral, the 'Shape-Up' programme (<http://camden.gov.uk/ccm/>

Figure 1 CAMWEL intervention framework.

* Provide information on consequences, Prompt intention formation, Prompt barrier identification, Provide general encouragement, Model or demonstrate behaviour, Prompt specific goal setting, Prompt review of behavioural goals, Prompt self-monitoring of behaviour, Provide feedback on performance, Agree on behavioural contract, Plan social support, Prompt self-talk, Relapse prevention, Stress management, Motivational interviewing.

^Δ The 100 Calories Kit was designed by the CAMWEL Team, and was made up of 100 calorie portions of a variety of foods such as crisps, rice, pasta, biscuit, peanuts, and raisins.

^β The pedometers used were DW701 Yamax Digiwalker for BMI<35, and NEW-LIFESTYLES NL-800 for BMI≥35.

^Ω Adams Portion Pot – www.adamspotionpot.com

navigation/leisure/sport-and-physical-activity/get-active-and-healthy/lose-weight/), prescription of weight loss medication, weight loss surgery or no further treatment.

All participants were given the British Heart Foundation booklet: "So you want to lose weight ... for good."³⁶

Recruitment

All general practices in Camden were visited and invited to participate in the trial. Participants were recruited between July 2009 and January 2010 from 23 of 39 NHS

Camden general practices. The London Borough of Camden has areas of relative affluence alongside areas of relative deprivation, with approximately 35% of the population living in areas classified as some of the most deprived in England.³⁷ Education levels are also disparate, with 47% of people in employment being educated to degree level or above, while 17% of working age people have no qualifications.³⁸ Camden has an ethnically diverse population, with 27% belonging to minority ethnic groups.³⁸

Several recruitment approaches were used. Primarily, participating practices wrote to a sample of patients with BMI ≥ 25 kg/m²; GPs and practice nurses were provided with referral 'prescription' pads with a tear-off slip to be given to the patient with contact details of the trial office; and posters and flyers were placed in practice waiting areas and local pharmacies. During the final 6 weeks of the recruitment period, three practices supplemented recruitment by sending text messages to potentially eligible patients using their electronic record (EMIS) and messaging (iPLATO) systems. All practices were reimbursed for time spent on recruitment.

Baseline measurements

Potential participants were screened by telephone for eligibility (MH, EH, TP). Inclusion criteria were: age 18 years and above, BMI ≥ 25 kg/m², attending a participating practice and willing to attend visits with a CAMWEL advisor over 12 months. Exclusion criteria were pregnancy or lactation, diagnosis of renal failure, use of a pacemaker, recent diagnosis of cancer or participation in another weight management study. Following GP consent, participants were scheduled for screening appointments with a researcher (MH) at one of three practices. The study was explained and the participant invited to give informed written consent and to complete the baseline questionnaire. Height (without shoes) was measured to the nearest 0.1 cm using a stadiometer. Weight (in light clothing) was measured using the Tanita (BC 420 MA) scales. The scales also reported per cent body fat, basal metabolic rate and metabolic age (age expected for a given value of basal metabolic rate). Waist was measured midway between the iliac crest and the costal margin to the nearest 0.1 cm. Blood pressure and heart rate were measured using a digital automatic monitor (Omron Model M10-IT), with the average of three readings recorded where possible. The printout from the Tanita scales, including weight, BMI and metabolic age, was given to all participants.

Outcomes

All participants were invited for follow-up at 6 and 12 months. A letter was sent 3 weeks prior to the due date, followed by a telephone call to arrange the appointment. Three attempts were made to contact each participant. Measurements taken at baseline were repeated and participants were asked to complete a questionnaire. A £30 voucher was provided for their time to all participants who completed each follow-up appointment.

The self-completed questionnaires included the following validated measures: EuroQol Visual Analogue Scale, Obesity and Weight Loss Quality-of-Life,³⁹ Hospital Anxiety and Depression Scale,⁴⁰ Rosenberg measure of self-esteem,⁴¹ Duke-UNC Functional Social Support Questionnaire,⁴² Three-Factor Eating Questionnaire-18⁴³ and physical activity (RPAQ),⁴⁴ as well as socio-demographic information. Deprivation was ascer-

tained using the Index of Multiple Deprivation based on the participant's home address postcode.⁴⁵

In addition, at follow-up, we used the Patient Assessment of Care for Chronic Conditions^{46 47} to assess the participants' views on the care they received from the advisors and the GP practice on helping them lose weight. A brief series of statements was used to assess participants' confidence in their ability to manage their weight on a scale of 1 (disagree strongly) to 4 (agree strongly). Further questions asked about the type of help received from the GP practice regarding weight loss, changes made in behaviours related to weight management and experience of study participation. Participants in the intervention group also completed an additional section to ascertain how helpful they found the sessions and materials provided as part of the CAMWEL programme.

Randomisation

Participants were randomly allocated (allocation ratio 1:1) to the control or intervention group (TP, EH, AS), using a computer-generated randomisation application written in VBA for MS Access (TP). The Taves method of minimisation⁴⁸ was used to ensure the groups were balanced for general practice, gender, age group (≤ 50 / >50 years), BMI category (≤ 30 / >30 kg/m²), diagnosis of diabetes (yes/no) and taking antipsychotic medication or not.

Blinding

The study was single blinded with members of the study team assessing baseline and follow-up measurements blinded to group assignment.

Sample size

In our pilot study, participants had a mean weight of 98.1 kg (SD 17.3 kg) at baseline.¹⁸ Since a loss of 5%–10% of body weight in obese adults is associated with significant reductions in the risk of obesity comorbidities, we considered a difference in weight between groups of 7% at 12-month follow-up to be clinically important. For the sample size calculation, we wished to detect a mean weight difference of 6.9 kg at 12 months between the two groups with two-sided statistical significance of 1%, power at 90% and the correlation coefficient between baseline and follow-up values conservatively set at 0.7. We thus calculated a total sample size of 228 (114 per group). Assuming a loss to follow-up at 12 months of 40%,⁴⁹ it was estimated that 380 participants would be required.

Statistical methods

Comparisons between groups for continuous variables were performed using two-sample t tests and regression methods, adjusting for the baseline value of the variable. χ^2 tests and logistic regression were used for categorical variables. Changes were calculated as value at follow-up minus baseline value. Primary analyses were conducted on an intention-to-treat basis, using multiple

imputation (MI) to account for missing data at follow-up. Exclusion of subjects with missing data is inefficient and can lead to biased results if those dropped are atypical in some respect⁵⁰ and MI can both increase efficiency and reduce bias in such settings.^{51 52} Missingness in this study is dominated by attrition, but there are also some intermediate missing outcome values and missing baseline values (although not for weight) so the 'Fully Conditional Specification' form of MI has been used.⁵³ For each outcome, the full set of imputation variables comprised the outcomes at each of the three occasions, together with a set of baseline variables selected for their non-negligible association with missingness or weight loss. For all outcomes, the following baseline variables were included: age, weight, per cent body fat, BMI, fat mass, metabolic age, deprivation status and employment status as well as totals from the Obesity and Weight Loss Quality-of-Life, EuroQol Visual Analogue Scale, Hospital Anxiety and Depression Scale anxiety, Three-Factor Eating Questionnaire emotional eating and RPAQ scales. The imputation procedure was

carried out separately for the two groups (intervention and control), and the resulting multiply imputed data sets were combined for the final MI analysis. A total of 200 imputations were used to stabilise the results and to ensure negligible loss of power.⁵⁰ Analyses using only data on participants who completed 12-month follow-up were also conducted.

Exploratory analyses (not using MI) were conducted excluding subjects who had bariatric surgery or were prescribed weight loss medication during the course of the trial. We also examined whether the degree of weight loss was associated with baseline characteristics or with changes in health or quality-of-life measures. Analyses were performed using STATA V.11.

Ethical approval

The study was approved by the London School of Hygiene & Tropical Medicine Ethics Committee, the Camden and Islington Community Research Ethics Committee (reference number 09/H0722/22) and the North Central London Research Consortium.

Figure 2 Flow of participants through the trial.

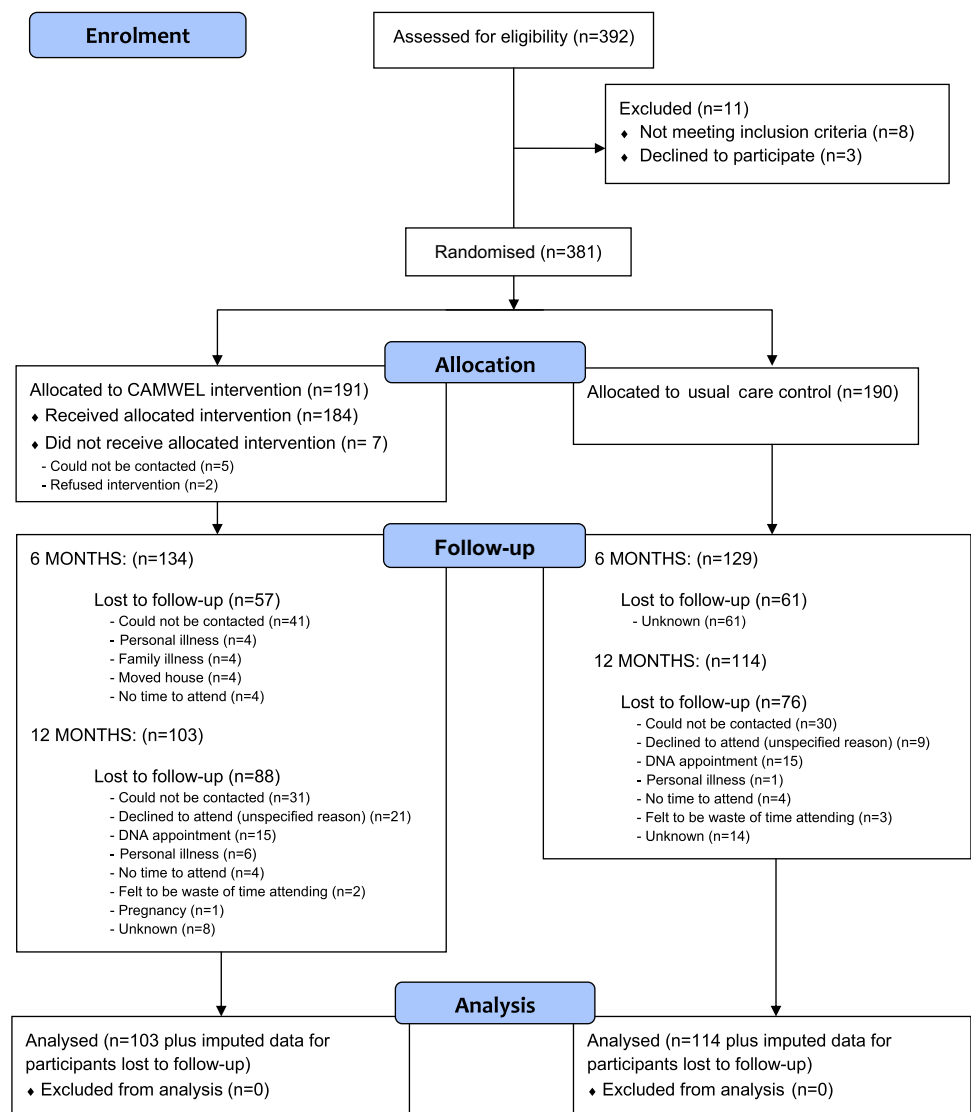


Table 1 Baseline characteristics of participants wishing to lose weight allocated to usual care (control) or to the CAMWEL programme (intervention)

Characteristics	Control group (n=190)	Intervention group (n=191)	All (n=381)
Age (years), % (n)	49.35 (15.45)	48.17 (14.09)	48.76 (14.77)
Age group (years), % (n)			
18–<35	20.53 (39)	20.94 (40)	20.73 (79)
35–<50	32.63 (62)	31.41 (60)	32.02 (122)
50–<60	19.47 (37)	24.08 (46)	21.78 (83)
≥60	27.37 (52)	23.56 (45)	25.46 (97)
Body weight (kg)	90.95 (18.12)	93.70 (18.40)	92.33 (18.29)
Waist circumference (cm)	105.83 (13.01)	107.56 (12.78)	106.70 (12.91)
Per cent body fat	38.90 (7.83)	39.45 (8.06)	39.18 (7.93)
Fat mass (kg)	35.83 (12.82)	37.28 (12.70)	36.52 (12.76)
Muscle mass (kg)	52.18 (10.05)	53.39 (10.55)	52.76 (10.30)
BMI (kg/m ²)	33.02 (5.40)	33.92 (5.64)	33.47 (5.53)
BMI 25–<30, % (n)	31.05 (59)	25.65 (49)	28.35 (108)
BMI ≥30, % (n)	68.95 (131)	74.35 (142)	71.65 (273)
Systolic blood pressure (mm Hg)	126.42 (20.44)	127.43 (20.17)	126.92 (20.28)
Diastolic blood pressure (mm Hg)	82.15 (12.36)	83.40 (12.83)	82.77 (12.59)
Heart rate (beats per minute)	76.68 (12.05)	75.94 (12.03)	76.32 (12.03)
Demographic details, % (n)			
Gender: Female	72.63 (138)	71.73 (137)	72.18 (275)
Ethnicity: white	70.63 (101)	74.25 (124)	72.58 (225)
Education			
No qualifications	14.19 (21)	8.82 (15)	11.32 (36)
O/A-level or equivalent	27.71 (41)	38.23 (65)	33.33 (106)
University degree	48.65 (72)	44.71 (76)	46.54 (148)
Employment			
Employed fulltime	37.50 (57)	49.12 (84)	43.65 (141)
Employed half-time	19.08 (29)	14.04 (24)	16.41 (53)
Unemployed	43.42 (66)	36.84 (63)	39.94 (129)
Area deprivation (IMD)			
Lowest quartile (deprived)	26.06 (49)	23.94 (45)	25.00 (94)
2nd quartile	25.00 (48)	23.40 (44)	24.20 (91)
3rd quartile	25.53 (47)	25.00 (47)	25.27 (95)
Highest quartile (affluent)	23.40 (44)	27.66 (52)	25.53 (96)
Family member overweight	78.67 (118)	77.33 (133)	77.95 (251)
QoL (range of values for each scale)			
EQ-VAS (0, 100)	48.22 (30.18)	47.42 (30.68)	47.80 (30.40)
Self-esteem (1, 30)	18.51 (6.01)	18.95 (5.89)	18.74 (5.94)
Social support (1, 5)	3.84 (1.03)	3.91 (1.02)	3.87 (1.03)
Depression (0, 19)	6.07 (4.20)	6.34 (4.31)	6.21 (4.25)
Anxiety (0, 19)	7.81 (4.32)	8.66 (4.83)	8.25 (4.60)
Obesity-related QoL (0, 102)	51.29 (26.71)	48.55 (25.47)	49.85 (26.06)

Values are means (SDs) unless stated otherwise (number of subjects may differ for each variable).

BMI, body mass index; EQ-VAS, EuroQoL Visual Analogue Scale; IMD, Index of Multiple Deprivation; QoL, quality of life.

RESULTS

Participants were followed up at 6 months between January 2010 and July 2010 and at 12 months between July 2010 and January 2011. Participant flow through the trial is shown in figure 2.

Baseline characteristics

We recruited 381 participants with a median age of 48.5 (IQR 37.5–60.4), weighing 60.1–152.2 kg, with waist circumference of 76–147 cm. The majority (72%) were women, 12% (47/381) had diagnosed diabetes, 1.3% (5/381) were on antipsychotic medication, 60% were in employment, 47% were university graduates and 73% described their ethnicity as Caucasian (table 1). Parti-

cipants wanted to lose an average of 18 kg (SD =12.4), representing 16.7% of their baseline weight. There were no significant differences between groups for any of these variables.

Response rates

Measurements were obtained for 69% (n=263) of the sample at 6 months and 57% (n=217) at 12 months. There were no significant differences in follow-up rate at 12 months by randomisation group (60.0% control, 53.9% intervention, $p=0.23$), but those followed up tended to be older, have lower BMI, fat mass and per cent body fat, and were less likely to be from a deprived area than those not followed up (table 2).

Table 2 Comparison of baseline characteristics of participants followed up at 12 months and those lost to follow-up (mean (SE) unless otherwise stated)

	Followed up	Lost to follow-up	Difference (lost to follow-up – followed up) Mean (95% CI)
Number (%)	217 (57.0)	164 (43.0)	
Age (years)	51.22 (1.01)	45.50 (1.10)	–5.72 (–8.68 to –2.77)
Weight (kg)	90.86 (1.19)	94.26 (1.48)	3.39 (–0.31 to 7.10)
Waist (cm)	106.50 (0.89)	106.96 (0.99)	–0.46 (–2.18 to 3.10)
Per cent body fat	38.47 (0.55)	40.10 (0.60)	1.63 (0.02 to 3.24)
BMI (kg/m ²)	32.92 (0.37)	34.18 (0.44)	1.26 (0.14 to 2.37)
Metabolic age (years)	60.70 (0.98)	56.50 (1.08)	–4.20 (–7.06 to –1.28)
Fat mass (kg)	35.26 (0.93)	38.14 (1.07)	2.88 (0.10 to 5.67)
Muscle mass (kg)	52.49 (0.76)	53.10 (0.86)	0.61 (–1.65 to 2.87)
Basal metabolic rate (kcal)	1682 (23.17)	1721 (27.23)	39.0 (–31.0 to 109.0)
Female, % (n)	70.97 (154)	73.78 (121)	2.81 (–6.23 to 11.86)
Married/cohabiting, % (n)	45.36 (83)	48.00 (60)	2.64 (–8.70 to 13.99)
White ethnicity, % (n)	73.02 (138)	71.90 (87)	–0.11 (–11.32 to 9.10)
No qualifications, % (n)	13.16 (25)	8.59 (11)	–4.56 (–11.40 to 2.27)
Employed, % (n)	81.68 (107)	71.90 (87)	–9.78 (–20.17 to 0.61)
Deprived area, % (n)	19.16 (41)	32.72 (53)	13.55 (4.61 to 22.50)
Self-esteem	19.14 (0.44)	18.15 (0.55)	–0.99 (–2.38 to 0.40)
Social support	3.86 (0.08)	3.91 (0.09)	0.05 (–0.18 to 0.29)
Anxiety	4.73 (0.14)	5.13 (0.16)	0.40 (–0.01 to 0.82)
Depression	3.51 (0.13)	3.68 (0.17)	0.17 (–0.23 to 0.59)
EQ-VAS	62.44 (1.53)	54.92 (2.31)	–7.52 (–2.05 to –12.98)
Obesity and weight-related quality of life	47.31 (1.89)	53.56 (2.37)	6.25 (0.33 to 12.18)

BMI, body mass index; EQ-VAS, EuroQol Visual Analogue Scale.

Primary outcome

Based on the intention-to-treat analysis using imputed missing values (table 3), at 12-month follow-up, structured support resulted in a mean difference in weight loss between the two groups of -0.70 (-2.71 to 0.76) kg. A higher proportion of participants lost 5% or more of their baseline weight in the intervention (32.7%, 95% CI 24.9% to 40.5%) when compared with the usual care (20.4%, 95% CI 13.3% to 27.5%) group (OR 1.80 (1.02 to 3.18, $p=0.04$).

Secondary outcomes

The intervention programme was also associated with weak evidence of beneficial trends in waist circumference, per cent body fat and per cent weight change. Heart rate was reduced by 3.7 (0.3 to 7.0, $p=0.03$) beats per minute in the intervention group compared with the control group.

Based on data for participants who completed the 12-month follow-up (table 3), a higher proportion (one in three compared to one in five) in the intervention group had lost at least 5% of their initial weight (difference 14.7% (3.0 to 26.4, $p=0.01$)) and experienced a greater average reduction in waist circumference (difference 1.88 cm (0.01 to 3.76, $p=0.05$)) compared with those in the control group. Weak evidence of reductions in weight, per cent body fat, BMI, blood pressure and heart rate were observed in the intervention group compared with the control group. The absolute risk reduction for losing 5% baseline weight was 14.7% (3.0 to 26.4), and the

number needed to treat was 6.8 (3.8 to 33.2). A higher proportion of those in the intervention group (84%, 21/25) who had lost $\geq 5\%$ at 6 months had managed to keep this level of weight loss at 12 months compared with those in the control group (61.5%, 8/13). We were unable to identify characteristics of the subgroup of participants more likely to lose 5% of their baseline weight.

No evidence of differences was found between the two groups on any of the psychological or quality-of-life measures.

Trial participation

Participants in the intervention group were more satisfied than those in the control group with the level of weight loss achieved and they found participation in the trial and feedback of physical measurements helpful (table 4). The intervention group also reported receiving more patient-centred care than those in the control group as measured by the Patient Assessment of Care for Chronic Conditions scales (table 5). Detailed analysis of the interviews and focus groups with a subset of the participants will be reported elsewhere.

The intervention programme

The majority of participants (38/56, 67.9%) reported that a regular meeting with the advisor was the most helpful aspect of the programme and the least helpful was the use of handouts in improving eating habits (17/56, 30.3%). The majority (84%) said they would choose to continue to meet an advisor beyond the 12 months of

Table 3 Changes in outcomes at 6 and 12 months and treatment differences between participants wishing to lose weight allocated to a structured one-to-one weight loss programme (intervention) or to usual care (control)

Unadjusted change from baseline (95% CI)					Average difference between groups (intervention – control)		Difference between groups (\$ OR) based on multiple imputation* (95% CI)		p Value
Control group		Intervention group		Mean (95% CI)	p Value	t Test/ χ^2	p Value		
Variables	Number	Mean (95% CI)	Number					Mean (95% CI)	
Weight (kg)									
6 months	129	–0.95 (–1.74 to –0.16)	134	–1.73 (–2.47 to –0.99)	–0.78 (–1.85 to 0.30)	0.16	–0.69 (–1.80 to 0.41)	0.22	
12 months	114	–1.31 (–2.23 to –0.37)	103	–2.39 (–3.46 to –1.31)	–1.08 (–2.49 to 0.32)	0.13	–0.70 (–2.17 to 0.76)	0.35	
Waist circumference (cm)									
6 months	125	–2.19 (–3.12 to –1.26)	129	–3.36 (–4.42 to –2.29)	–1.17 (–2.58 to 0.24)	0.10	–0.90 (–2.35 to 0.55)	0.22	
12 months	112	–1.49 (–2.59 to –0.40)	100	–3.37 (–4.91 to –1.82)	–1.88 (–3.76 to –0.01)	0.05	–1.22 (–3.10 to 0.66)	0.20	
Per cent body fat									
6 months	125	–0.12 (–0.66 to 0.42)	131	–0.89 (–1.36 to –0.43)	–0.77 (–1.48 to –0.06)	0.03	–0.77 (–1.51 to –0.04)	0.04	
12 months	111	–0.23 (–1.02 to 0.57)	101	–0.72 (–1.27 to –0.15)	–0.49 (–1.47 to 0.49)	0.32	–0.71 (–1.71 to 0.28)	0.16	
Per cent weight loss									
6 months	129	–1.04 (–1.88 to –0.20)	134	–1.78 (–2.51 to –1.05)	–0.74 (–1.85 to 0.36)	0.19	–0.73 (–1.91 to 0.44)	0.22	
12 months	114	–1.38 (–2.39 to –0.37)	103	–2.59 (–3.65 to –1.54)	–1.21 (–2.66 to 0.23)	0.10	–0.79 (–2.37 to 0.79)	0.33	
Per cent lost \geq 5% baseline weight									
6 months	129	13.18 (7.34 to 19.02)	134	23.88 (16.66 to 31.10)	10.70 (1.41 to 19.98)	0.03	1.77 (0.96 to 3.23)†§	0.06	
12 months	114	19.30 (12.05 to 26.54)	103	33.98 (24.83 to 43.13)	14.68 (3.01 to 26.35)	0.01	1.80 (1.02 to 3.18)†§	0.04	
BMI (kg/m ²)									
6 months	129	–0.36 (–0.65 to –0.07)	134	–0.60 (–0.86 to –0.34)	–0.24 (–0.63 to 0.14)	0.22	0.20 (–0.18 to 0.59)	0.30	
12 months	114	–0.48 (–0.82 to –0.13)	103	–0.83 (–1.22 to –0.44)	–0.35 (–0.87 to 0.16)	0.18	0.34 (–0.18 to 0.85)	0.20	
Systolic blood pressure (mm Hg)									
6 months	121	–2.92 (–6.56 to 0.73)	128	0.29 (–3.54 to 4.12)	3.20 (–2.07 to 8.45)	0.23	3.33 (–1.34 to 8.00)	0.16	
12 months	103	–0.97 (–5.02 to 3.07)	90	–0.71 (–3.97 to 2.54)	0.25 (–5.01 to 5.50)	0.92	–0.01 (–4.65 to 4.64)	0.99	
Diastolic blood pressure (mm Hg)									
6 months	121	–2.29 (–4.70 to 0.12)	128	–1.52 (–3.98 to 0.95)	0.77 (–2.66 to 4.21)	0.66	1.87 (–1.12 to 4.87)	0.22	
12 months	103	0.83 (–1.89 to 3.56)	90	–0.68 (–2.83 to 1.46)	–1.51 (–4.96 to 1.93)	0.39	–1.59 (–4.77 to 1.60)	0.33	
Heart rate (beats per minute)									
6 months	120	2.38 (0.21 to 4.55)	127	–0.47 (–2.79 to 1.85)	–2.86 (–6.02 to 0.31)	0.08	–2.42 (–5.47 to 0.62)	0.12	
12 months	104	–0.23 (–2.82 to 2.36)	90	–2.68 (–5.33 to 0.02)	–2.44 (–6.14 to 1.25)	0.19	–3.68 (–7.04 to –0.31)	0.03	
*For all outcomes the following baseline variables were included: age, weight, per cent body fat, body mass index (BMI), fat mass, metabolic age, deprivation status and employment status as well as physical activity (RPAQ) scales.									
†Per cent lost \geq 5% baseline weight control: 16.0 (9.7 to 22.3)%, intervention: 25.2 (18.0 to 32.3)%.									
‡Per cent lost \geq 5% baseline weight control: 20.4 (13.3 to 27.5)%, intervention: 32.7 (24.9 to 40.5)%.									
§Values represent OR									

*For all outcomes the following baseline variables were included: age, weight, per cent body fat, body mass index (BMI), fat mass, metabolic age, deprivation status and employment status as well as totals from the Obesity and Weight Loss Quality-of-Life, EuroQol Visual Analogue Scale, Hospital Anxiety and Depression Scale (anxiety), Three-Factor Eating Questionnaire (emotional eating) and physical activity (RPAQ) scales.

†Per cent lost \geq 5% baseline weight control: 16.0 (9.7 to 22.3)%, intervention: 25.2 (18.0 to 32.3)%.

‡Per cent lost \geq 5% baseline weight control: 20.4 (13.3 to 27.5)%, intervention: 32.7 (24.9 to 40.5)%.

§Values represent OR.

Table 4 Participant satisfaction with care received by allocation group at 12 months

	Intervention		Control		Difference between groups (intervention – control)	
	n/N	% (SE)	n/N	% (SE)	% (95% CI)	p Value
Satisfied with level of weight loss achieved	37/60	61.7 (6.3)	14/61	23.0 (5.4)	38.7 (22.5 to 54.9)	<0.0001
Found participating in CAMWEL helpful in meeting goals	51/59	86.4 (4.4)	27/60	45.0 (6.4)	41.4 (26.1 to 56.8)	<0.0001
Found getting feedback on physical measurements at baseline and 6 months helpful	39/58	67.2 (6.3)	20/57	35.1 (6.3)	32.2 (14.9 to 49.5)	<0.0001
Found British Heart Foundation booklet ³¹ helpful	50/58	86.2 (4.5)	38/53	71.7 (6.2)	14.5 (0.0 to 29.5)	0.06

the current study, with most (73%) preferring to see the advisor at least every 4 weeks.

Behaviours associated with losing 5% or more of baseline weight

Participants who lost 5% or more of their baseline weight were more likely to state that they had reduced their fat and sugar intake in the previous 6 months than those who did not; there was no evidence of increasing levels of physical activity between the groups (table 6). They also reported that attending regular meetings with a non-judgemental advisor, discussion on portion sizes and use of the pedometer were particularly useful and that they would continue to monitor food intake to maintain their weight.

Exploratory analysis

Thirty-eight participants were known to have been prescribed drugs for weight loss or to have undergone weight loss surgery during the trial period. Of these, 27 were followed up at 12 months (12 control: mean weight change -2.44 kg (-7.15 to 2.27); 15 intervention: mean weight change -3.51 kg (-6.95 to -0.08)). The difference between groups was 1.07 kg (-4.32 to 6.46 , $p=0.69$). In analysis excluding these participants, those in the intervention group showed significantly greater reductions in weight (1.72 kg (0.29 to 3.14 , $p=0.02$)), waist circumference (2.52 cm (0.32 to 4.72 , $p=0.03$)), BMI (0.63 kg/m² (0.11 to 1.14 , $p=0.02$)) and per cent baseline weight loss (1.94% (0.32 to 3.56 , $p=0.02$)) when compared with the control group at 12 months. In addition, a higher

Table 5 Participant assessment of care received by allocation group at 12 months

	Intervention		Control		Difference between groups (intervention – control)	
	n	Mean (SE)	n	Mean (SE)	Mean (95% CI)	p Value
PACIC*						
Patient activation	58	3.29 (0.17)	56	1.46 (0.13)	1.83 (1.40 to 2.26)	<0.0001
Asked for my ideas						
Given choices						
Asked about any problems						
Delivery system design/decision support	58	3.79 (0.14)	55	1.70 (0.16)	2.09 (1.68 to 2.50)	<0.0001
Written list of things to do						
Care well organised						
How what I do influences weight						
Goal setting	58	3.35 (0.13)	54	1.64 (0.14)	1.71 (1.32 to 2.09)	<0.0001
Asked to talk about my goals						
Helped to set specific goals						
Given copy of my weight loss plan						
Encouraged to attend sessions						
Asked questions about health habits						
Problem solving/contextual counselling	58	3.34 (0.16)	56	1.66 (0.15)	1.69 (1.26 to 2.12)	<0.0001
Thought about my beliefs and traditions when making recommendations						
Helped to make plan for my daily life						
Plan ahead even for difficult circumstances						
Asked how weight affected me						

*Patient Assessment of Care for Chronic Conditions (PACIC) score.^{46 47}

Table 6 Reported changes* in eating and activity habits by participants who lost 5% or more of baseline weight compared with those who did not

	Lost 5% or more of baseline weight				Difference between groups (yes – no)	p Value
	Yes (N=41)		No (N=111)			
	n	%	n	%	Percent (95% CI)	
What changes have you made to your diet during the last 12 months? (Tick all that apply)						
Reduced my fat intake	35	85.4	66	59.5	25.9 (11.7 to 40.1)	0.003
Reduced my sugar intake	24	58.5	43	38.7	19.8 (22.0 to 37.4)	0.029
Reduced my portion sizes	28	68.3	58	52.3	16.0 (–0.97 to 33.0)	0.077
What changes have you made to your activity levels in the last 12 months? (Tick all that apply)						
Used the stairs instead of taking the lift	17	41.5	31	27.9	13.6 (–3.7 to 30.8)	0.111
Joined a gym specifically to lose weight	13	31.7	20	18.0	13.7 (–2.2 to 29.6)	0.069
Get off one stop earlier when travelling by bus or tube	8	19.5	16	14.4	5.1 (–8.7 to 8.9)	0.444
Walk rather than take car for journeys that are less than one mile	21	51.2	44	39.6	11.6 (–6.2 to 29.4)	0.200
How will you continue to manage your weight; will you						
Monitor your food intake?	32	78.1	59	52.7	25.4 (9.69 to 41.1)	0.005
Control your portions?	26	63.4	59	52.7	10.7 (–6.67 to 28.1)	0.237
Use a pedometer?	13	31.7	20	17.9	13.8 (–2.1 to 29.8)	0.065
Monitor your activity patterns?	23	56.1	44	39.3	16.8 (–0.86 to 34.4)	0.063

*Data are missing for 75 participants who did not complete this section of the questionnaire.

proportion of participants in the advisor group lost $\geq 5\%$ of their baseline weight when compared with the control group (OR 2.68 (1.13 to 5.70, $p=0.03$)).

The number of sessions attended was available for 87 participants of whom 40 (46%) attended more than 70% (10/14) of the available sessions. Half (50%) of the participants attending more than 70% of the programme lost 5% or more of their baseline weight compared with a quarter (23%) who attended fewer sessions (difference 26.5%, 95% CI 6.9 to 46.3, $p=0.01$).

DISCUSSION

Principal findings

The structured one-to-one weight loss programme delivered by non-specialists in general practice did not achieve the pre-specified difference in average weight loss of 7%. However, it did result in a higher proportion of the participants losing 5% or more of their baseline weight compared with those randomised to usual care, which is considered a clinically important outcome in similar trials. This suggests that people likely to benefit from such a programme are a subset of the total study population but we were unable to identify particular characteristics that would permit identification of a receptive group in advance. There was some evidence that the intervention group experienced greater reductions in mean weight, waist circumference and % body weight than the control group. While the overall effects on weight loss are modest, they are not unimportant.

Strengths and weaknesses of the study

The key strengths of the CAMWEL programme are its wide applicability to overweight and obese people from

diverse backgrounds as there were few exclusions, feasibility of its delivery in primary care by non-specialist trained advisors and a patient-centred approach to making sustainable changes to diet and physical activity easily incorporated into peoples' daily lives.

Limitations include the slow initial recruitment, although this improved over time, particularly with mobile phone text message use.⁵⁴ Loss to follow-up was high (43%), although similar to that of other weight loss studies in the UK.^{55–58} The response rate in the DESMOND diabetes management trial¹⁹ was substantially higher (91%), perhaps because participants were recently diagnosed diabetics and therefore highly motivated. High attrition in RCTs of weight loss is well recognised,⁵⁹ with a recent review reporting losses to follow-up of 30%–60%.⁴⁹

We used MI for missing values to counter any biases due to loss to follow-up as high level of attrition involves considerable uncertainty about outcomes for participants lost to follow-up. We included patients with BMI ≥ 25 as NICE recommends treatment at this level, although this relatively low threshold and broad inclusion criteria may have diluted the results in terms of average weight loss thus needing a larger sample to detect significant differences.

Participants in the control group were advised to contact their general practice to receive the usual care provided for weight loss. We provided all GPs with NICE guidelines on obesity and participants with the British Heart Foundation booklet on weight loss as well as feedback on the measurements taken at 6 months. This provision of support could be one reason why participants in the control group also lost weight over the period of

Table 7 Studies on weight loss conducted in general practice in the UK with 12-month follow-up

Study	Design	Intervention	Eligibility criteria	Weight (kg) at baseline, mean (SD)	Per cent (n/N) followed up at 12 months	Mean weight change (kg) at 12 months			Lost ≥5% baseline weight in the intervention group, % (95% CI)
						Intervention	Control	Difference (95% CI)	p Value
Moore <i>et al</i> , <i>BMJ</i> (2003) ⁶²	Cluster RCT	Trained GPs, nurses	BMI ≥30	—	67.7 (565/834)	−0.6	−0.9	1.0*	0.5
McConnon <i>et al</i> , <i>BMC</i> (2007) ⁵⁵	RCT	Access to website	BMI ≥30; access to internet	98.4 (17.4)	59.3 (131/221)	−1.3	−1.9	0.6 (1.4 to 2.5)	0.56
Davies <i>et al</i> , <i>DESMOND</i> , <i>BMJ</i> (2007) ¹⁹	RCT	Group sessions	Newly diagnosed type 2 diabetes	—	90.9 (729/824)	−3.0	−1.9	−1.0 (−1.9 to −0.12)	0.03
Ross <i>et al</i> , <i>Counterweight</i> , <i>BJGP</i> (2008) ⁵⁶	Audit	Trained practice nurses	BMI ≥30; BMI ≥28 with comorbidities	—	45.2 (642/1419)	−3.0	—	—	—
Ahern <i>et al</i> , <i>Weight Watchers</i> , <i>BMC</i> (2011) ⁶³	Audit	Weight Watchers meetings	BMI ≥30; NHS referral scheme	94.3 (IQR 83.7–107.7)	53	Median = −2.8	—	—	—
Jebb <i>et al</i> , <i>Weight Watchers</i> , <i>Lancet</i> (2011) ⁵⁷	RCT	Weight Watchers meetings	BMI 27–35 + 1 risk factor	86.7	57.5 (444/772)	−5.1	−2.2	−3.2 (−4.2 to −2.1)	<0.0001
Jolly <i>et al</i> , <i>BMJ</i> (2011) ⁵⁸	RCT	Various†	White BMI ≥30/≥28 + comorbidity; S Asian BMI ≥25/≥23 + comorbidity	91.7 (17.9)	70.5 (522/740)	−3.5	−1.1	−2.5 (−4.2 to −0.8)	0.02
CAMWEL	RCT	One-to-one sessions	BMI ≥25	92.3 (18.3)	57 (217/381)	−2.4	−1.3	−1.1 (−2.5 to 0.3)	0.13

*Difference between groups at 12 months.

†Based on graph in table 3.

‡Range of commercial or primary care-led programmes, intervention results given for Weight Watchers. BMI, body mass index; GP, general practitioners; RCT, randomised controlled trial.

the trial resulting in greater similarity of changes in the two groups, which would represent bias if the GPs altered their usual care by virtue of trial participation. Outcomes of RCTs may be influenced by participants' treatment preference⁶⁰ and research assessment procedures⁶¹ triggering behaviour change and contributing to the weight loss seen in the control group.

Behaviour change interventions tend to be complex with multiple components and it is difficult to assess the effectiveness of different components. This was a pragmatic trial reflecting the likely performance of the programme as delivered in practice. While the fidelity of the delivery of the intervention could be examined in more detail, we have shown that patient assessment of the structured support by trained advisors is significantly better than usual care.

Cost-effectiveness analyses are required to inform decision making about the value of attaining these outcomes and will be reported in a separate paper.

Putting the study in context

Seven studies of weight change conducted in UK general practice have been published (see table 7). With the exception of a trial in newly diagnosed diabetics, RCTs provided no strong evidence of differences in weight loss between the intervention and control groups, except for those using a commercial provider (Weight Watchers). Our trial achieved results at least comparable with the more targeted interventions based in general practice.

Implications

We have demonstrated that one-to-one structured support by a trained advisor in general practice can help people wishing to lose weight change their behaviour sufficiently leading to a clinically important loss in weight. While 1 year may be too short a time to see all the benefits of a weight management intervention, the majority of participants found the Camwel programme helpful suggesting that they will continue to accrue benefit as they implement the behaviour change techniques learned during the study. Understanding how the intervention worked and why it worked just for some participants as well as its cost-effectiveness are important and we will explore these in our subsequent research. The importance of our results lies in their generalisability. Our results, together with those from other researchers, suggest that individual approaches in general practice can achieve modest benefits for the National Health Service. However, primary care interventions are unlikely to be sufficient to address the obesity epidemic and effective population-wide policy measures are needed as well, including increasing energy expenditure through active travel⁶⁴ and reducing dietary intake.

Acknowledgements We thank the study participants; the GPs and practice managers at the participating practices (Abbey Medical Centre, Ampthill Square Medical Centre, Belsize Priory Medical Practice, The Bloomsbury Surgery, Brondesbury Medical Centre, Brunswick Medical Centre, Camden Road Surgery, Chomley Gardens Surgery, Fortune Green Road Surgery, Gower Place Practice, Gower Street Practice, Grays Inn Medical Centre, Hampstead Group Practice, James Wigg Group Practice, Kings Cross Road

Practice, Museum Practice, Park End Surgery, Parliament Hill Surgery, Prince of Wales Group Practice, Swiss Cottage Surgery, Regents Park Practice); members of the advisory board (Chris Bonell, Phil Edwards, Susan Jebb, David Simpson and Paul Wilkinson); the advisors (Rosalind Bose, Gloria Ferenando, Gillian Lampert, Tim Whelan, Gina Williams, Diana Villamil); as well as Nick Cavill for helping to write the motivational physical activity handbook, Jim McCambridge for help with training advisors and commenting on the manuscript, Kate Lees for help with dietary aspects, Katie Williams (NHS Camden), Suzanne Taylor for data entry, David Taylor for assistance with database management, Ray Bird for audio-visual assistance, Laura Doubleday and Sarah Milton for helping with follow-up of participants, and Adams Portion Pots (Adams Insight Consulting, <http://www.adamsportionpot.com>) and NHS Camden for their support of this study.

Contributors KN, JLT, NT, DH, AK, SE and AH contributed to conception and design. MH, JLT, KN, EH, AS and UG contributed to acquisition of data, KN, TP, EH, MK and AH contributed to analysis and interpretation of data, and KN drafted the article. KN, JLT and AH revised it critically for important intellectual content. All authors contributed to the final approval of the version to be published.

Funding This work was supported by Camden Primary Care Trust (NHS Camden). The funding source had no role in the design or conduct of the study; collection, management, analysis or interpretation of the data and preparation, review or approval of the manuscript.

Competing interests All authors have completed the Unified Competing Interest form at http://www.icmje.org/coi_disclosure.pdf (available on request from the corresponding author) and declare that KN, TP, EH, MH, AS, UG and JLT had salary support from NHS Camden for the submitted work. AK was Director of Public Health at Camden Primary Care Trust between 2004 and 2009. The views expressed here are personal, and no financial support was received for the other authors' involvement in the CAMWEL Trial. No authors have had a relationship with companies that might have an interest in the submitted work in the previous 3 years nor do their spouses, partners or children have financial relationships that may be relevant to the submitted work. DH is on the scientific advisory board for LighterLife and no other authors have non-financial interests that may be relevant to the submitted work.

Ethics approval Ethics approval was provided by the London School of Hygiene & Tropical Medicine Ethics Committee, the Camden and Islington Community Research Ethics Committee (reference number 09/H0722/22) and the North Central London Research Consortium.

Provenance and peer review Not commissioned; externally peer reviewed.

Data sharing statement No additional data available.

REFERENCES

- Whitlock G, Lewington S, Sherliker P, *et al*; Prospective Studies Collaboration. Body-mass index and cause-specific mortality in 900,000 adults: collaborative analyses of 57 prospective studies. *Lancet* 2009;373:1083–96.
- Global Health Risks. *Mortality and Burden of Diseases Attributable to Selected Major Risks*. Geneva: World Health Organisation, 2009.
- Finucane MM, Stevens GA, Cowan MJ, *et al*; Global Burden of Metabolic Risk Factors of Chronic Diseases Collaborating Group (Body Mass Index). National, regional, and global trends in body-mass index since 1980: systematic analysis of health examination surveys and epidemiological studies with 960 country-years and 9.1 million participants. *Lancet* 2011;377:557–67.
- Whitlock G, Lewington S, Mhurchu CN. Coronary heart disease and body mass index: a systematic review of the evidence from larger prospective cohort studies. *Semin Vasc Med* 2002;2:369–81.
- Haslam DW, James WP. Obesity. *Lancet* 2005;366:1197–209.
- Foresight. *Tackling Obesities: Future Choices*. London: Government Office for Science, 2007.
- The NHS Information Centre, lifestyles Statistics. *Statistics On Obesity, Physical Activity and Diet*. England. 2012. <http://www.ic.nhs.uk/statistics-and-data-collections/health-and-lifestyles/obesity/statistics-on-obesity-physical-activity-and-diet-england-2012> (accessed Mar 2012).
- Perrin MG, Limacher MC, Durning PE, *et al*. Extended-care programs for weight management in rural communities: the treatment of obesity in underserved rural settings (TOURS) randomized trial. *Arch Intern Med* 2008;168:2347–54.

9. Perri MG, Sears SF Jr, Clark JE. Strategies for improving maintenance of weight loss. Toward a continuous care model of obesity management. *Diabetes Care* 1993;16:200–9.
10. Kinmonth AL, Wareham NJ, Hardeman W, *et al.* Efficacy of a theory-based behavioural intervention to increase physical activity in an at-risk group in primary care (ProActive UK): a randomised trial. *Lancet* 2008;371:41–8.
11. Wing RR, Phelan S. Long-term weight loss maintenance. *Am J Clin Nutr* 2005;82(Suppl 1):222S–5.
12. Aucott L, Poobalan A, Smith WC, *et al.* Weight loss in obese diabetic and non-diabetic individuals and long-term diabetes outcomes—a systematic review. *Diabetes Obes Metab* 2004;6:85–94.
13. Poobalan A, Aucott L, Smith WC, Avenell A, *et al.* Effects of weight loss in overweight/obese individuals and long-term lipid outcomes—a systematic review. *Obes Rev* 2004;5:43–50.
14. Avenell A, Broom J, Brown TJ, *et al.* Systematic review of the long-term effects and economic consequences of treatments for obesity and implications for health improvement. *Health Technol Assess* 2004;8:1–182.
15. Norris SL, Zhang X, Avenell A, *et al.* Long-term effectiveness of weight-loss interventions in adults with pre-diabetes: a review. *Am J Prev Med* 2005;28:126–39.
16. Norris SL, Zhang X, Avenell A, *et al.* Long-term effectiveness of lifestyle and behavioral weight loss interventions in adults with type 2 diabetes: a meta-analysis. *Am J Med* 2004;117:762–74.
17. Potter MB, Vu JD, Croughan-Minhane M. Weight management: what patients want from their primary care physicians. *J Fam Pract* 2001;50:513–18.
18. Nanchahal K, Townsend J, Letley L, *et al.* Weight-management interventions in primary care: a pilot randomised controlled trial. *Br J Gen Pract* 2009;59:e157–66.
19. Davies MJ, Heller S, Skinner TC, *et al.* Diabetes Education and Self Management for Ongoing and Newly Diagnosed Collaborative. Effectiveness of the diabetes education and self management for ongoing and newly diagnosed (DESMOND) programme for people with newly diagnosed type 2 diabetes: cluster randomised controlled trial. *BMJ* 2008;336:491–5.
20. Trueman P, Haynes SM, Felicity Lyons G, *et al.* Long-term cost-effectiveness of weight management in primary care. *Int J Clin Pract* 2010;64:775–83.
21. Wardle J, Johnson F. Weight and dieting: examining levels of weight concern in British adults. *Int J Obes Relat Metab Disord* 2002;26:1144–9.
22. Campbell M, Fitzpatrick R, Haines A, *et al.* Framework for design and evaluation of complex interventions to improve health. *BMJ* 2000;321:694–6.
23. Jones LR, Wadden RA. State of the science: behavioural treatment of obesity. *Asia Pac J Clin Nutr* 2006;15(Suppl 1):30–9.
24. Bandura A. Health promotion by social cognitive means. *Health Educ Behav* 2004;31:143–64.
25. Locke EA, Latham GP. Building a practically useful theory of goal setting and task motivation: a 35-year odyssey. *Am Psychol* 2002;57:705–17.
26. Alemi F, Neuhauser D, Ardito S, *et al.* Continuous self-improvement: systems thinking in a personal context. *Jt Comm J Qual Improv* 2000;26:74–86.
27. NICE Clinical Guidance 43 Obesity: Quick Reference Guide 2 for the NHS. London: National Institute for Health and Clinical Excellence, 2006.
28. Koenigsberg MR, Bartlett D, Cramer JS. Facilitating treatment adherence with lifestyle changes in diabetes. *Am Fam Physician* 2004;69:309–16.
29. Abraham C, Michie S. A taxonomy of behavior change techniques used in interventions. *Health Psychol* 2008;27:379–87.
30. Miller WR, Rose GS. Toward a theory of motivational interviewing. *Am Psychol* 2009;64:527–37.
31. Foreyt JP, Poston WS. What is the role of cognitive-behavior therapy in patient management? *Obes Res* 1998;6(Suppl 1):18S–22.
32. Managing Obesity in Primary Care CD-ROM. National obesity Forum, 2004. nationalobesityforum.org.uk
33. Kellow J, Costain L, Walton R. *The Calorie, Carb and Fat Bible*. Peterborough: weight loss Resources, 2009.
34. Byoni Ltd. *Perfect Diet Tracker Software*. <http://www.perfect-diet-tracker.com/>
35. Michie S, Rumsey N, Fussell A, *et al.* *Improving Health: Changing Behaviour NHS Health Trainer Handbook*. London: Department of Health, 2008.
36. British Heart Foundation. *So You Want to Lose Weight. For Good*. London: British Heart Foundation, 2005.
37. NHS Camden. *Annual Report & Accounts 2009/10*. Camden Primary Care Trust, 2010. http://www.camden.nhs.uk/downloads/012522A1_CNHS_Annual%20Report_LR.pdf
38. Forward Planning Service London Borough of Camden Camden Profile 2010. London Borough of Camden Forward Planning service. <http://www.camdendata.info/AddDocuments1/Forms/DispForm.aspx?ID=131>
39. Patrick DL, Bushnell DM, Rothman M. Performance of two self-report measures for evaluating obesity and weight loss. *Obes Res* 2004;12:48–57.
40. Olsson I, Mykletun A, Dahl AA. The Hospital Anxiety and Depression Rating Scale: a cross-sectional study of psychometrics and case finding abilities in general practice. *BMC Psychiatry* 2005;5:46.
41. Rosenberg M. *Society and the Adolescent Self Image*. Princeton, NJ: Princeton University Press, 1965.
42. Broadhead WE, Gehlbach SH, de Gruy FV, *et al.* The Duke-UNC Functional Social Support Questionnaire: measurement of social support in family medicine patients. *Med Care* 1988;26:709–23.
43. Karlsson J, Persson LO, Sjöström L, *et al.* Psychometric properties and factor structure of the three-factor eating questionnaire (TFEQ) in obese men and women. Results from the Swedish obese subjects (SOS) study. *Int J Obes Relat Metab Disord* 2000;24:1715–25.
44. Besson H, Brage S, Jakes RW, *et al.* Estimating physical activity energy expenditure, sedentary time, and physical activity intensity by self-report in adults. *Am J Clin Nutr* 2010;91:106–14.
45. Department for Communities and Local Government. *The English Indices of Deprivation 2010*. London, 2010. <http://www.communities.gov.uk/documents/statistics/pdf/1871208.pdf>
46. Glasgow RE, Wagner EH, Schaefer J, *et al.* Development and validation of the patient assessment of chronic illness care (PACIC). *Med Care* 2005;43:436–44.
47. Schmittiel J, Mosen DM, Glasgow RE, *et al.* Patient Assessment of Chronic Illness Care (PACIC) and improved patient-centered outcomes for chronic conditions. *J Gen Intern Med* 2008;23:77–80.
48. Scott NW, McPherson GC, Ramsay CR, *et al.* The method of minimization for allocation to clinical trials: a review. *Control Clin Trials* 2002;23:662–74.
49. Douketis JD, Macie C, Thabane L, *et al.* Systematic review of long-term weight loss studies in obese adults: clinical significance and applicability to clinical practice. *Int J Obes (Lond)* 2005;29:1153–67.
50. Carpenter JR, Kenward MG. *Missing Data in Clinical Trials—A Practical Guide*. National Health Service Coordinating Centre for Research Methodology. Birmingham, 2008. http://www.haps.bham.ac.uk/publichealth/methodology/docs/invitations/Final_Report_RM04_JH17_mk.pdf
51. Rubin DB. *Multiple Imputation for Nonresponse in Surveys*. New York: Wiley, 1987.
52. Kenward MG, Carpenter J. Multiple imputation: current perspectives. *Stat Methods Med Res* 2007;16:199–218.
53. Royston P. Multiple imputation of missing values. *STATA Journal* 2004;4:227–41.
54. Nanchahal K, Hession M, Power T, *et al.* Challenges in recruitment to clinical trials and lessons learned from a randomized controlled trial of a weight management intervention in general practice. *Obes Rev* 2010;11(Suppl S1):P214.
55. McConnon A, Kirk SF, Cockcroft JE, *et al.* The Internet for weight control in an obese sample: results of a randomised controlled trial. *BMC Health Serv Res* 2007;7:206.
56. Counterweight Project Team. Evaluation of the Counterweight Programme for obesity management in primary care: a starting point for continuous improvement. *Br J Gen Pract* 2008;58:548–54.
57. Jebb SA, Ahern AL, Olson AD, *et al.* Primary care referral to a commercial provider for weight loss treatment versus standard care: a randomised controlled trial. *Lancet* 2011;378:1485–92.
58. Jolly K, Lewis A, Beach J, *et al.* Comparison of range of commercial or primary care led weight reduction programmes with minimal intervention control for weight loss in obesity: Lighten Up randomised controlled trial. *BMJ* 2011;343:d6500.
59. Inelmen EM, Toffanello ED, Enzi G, *et al.* Predictors of drop-out in overweight and obese outpatients. *Int J Obes (Lond)* 2005;29:122–8.
60. Thomas E, Croft PR, Paterson SM, *et al.* What influences participants' treatment preference and can it influence outcome? Results from a primary care based randomised trial for shoulder pain. *Br J Gen Pract* 2004;54:93–6.
61. McCambridge J, Kypri K. Can simply answering research questions change behaviour? Systematic review and meta analyses of brief alcohol intervention trials. *PLoS One* 2011;6:e23748.
62. Moore H, Summerbell CD, Greenwood DC, *et al.* Improving management of obesity in primary care: cluster randomised trial. *BMJ* 2003;327:1085.
63. Ahern AL, Olson AD, Aston LM, *et al.* Weight Watchers on prescription: an observational study of weight change among adults referred to Weight Watchers by the NHS. *BMC Public Health* 2011;11:434.
64. Woodcock J, Edwards P, Tonne C, *et al.* Public health benefits of strategies to reduce greenhouse-gas emissions: urban land transport. *Lancet* 2009;374:1930–43.

APPENDIX 1

The structure of the CAMWEL intervention programme

Session number	Week	Topic materials	Handouts	
1	0	Getting started: establish working relationship and good rapport with participant; elicit personal reasons for losing weight, build commitment to program and introduce lifestyle changes approach. BHF 'So you want to lose weight' booklet	Sequence of topics Appointment card Benefits of healthy habits Recording your routines Deciding to change	Behaviour change diary Food diary Activity diary
2	2	Changing habits: review progress, explain importance of changing habits permanently and introduce the five steps to solving problems.	Problem solving Build a better recipe Just one more step	(Behaviour change diary) (Food diary) (Activity diary)
3	4	Healthy eating: review progress, explain importance of regular meals, portion sizes, keeping a record and discuss making easy food swaps. (Adam portion pots; 100 kcal portion size food box)	FSA Eat Well booklet Rate your plate Easy food swaps Healthy drinks Food labels card	(Activity diary)
4	6	Let's get active: review progress, explain importance of activity guidelines and discuss ways of incorporating physical activity into participant's lifestyle.	Being active Your guide to walking in Camden Cut the fat and sugar Camden outdoor gyms	Steps chart Printed weight graph (Rate your plate)
5	8	Taking charge of your environment: review progress, explain importance of cues and discuss ways of changing the environment to make losing weight the 'easy' option.	Your environment Goals and rewards Eat well on the cheap	(Rate your plate) (Steps chart) Printed weight graph
6	10	Eating when out and about: review progress, explain keys to making healthy choices when out and about and discuss alcohol if appropriate.	Healthy choices Alcohol and your diet Eating when out and about	(Rate your plate) (Steps chart)
7	12	Tip the calorie balance: review progress at 3-month stage of programme; explain energy balance equation, importance of healthy eating, being active, social support and action planning.	Tipping the calorie balance Individual printed weight graph	(Steps chart) (Rate your plate)
8	15	Positive thinking: review progress and introduce ways to stop negative thoughts and 'talk back' with positive ones.	Positive thinking Camden Walk4Life maps	(Food diary) (Activity diary) (Steps chart) (Rate your plate) (Behaviour change diary)
Continued				

Continued			
Session number	Week	Topic materials	Handouts
9	18	Getting off the slippery slope: review progress, identify reasons for slips and ways of getting back on course.	Slippery slope Camden Walk4Life maps BHF 'Healthy meals, Healthy Heart' or 'Food should be fun and healthy' menus Individual printed weight graph
10	21	Social eating: review progress, discuss social settings where it may be difficult to stay in control of eating healthily and ways to overcome this and enjoy healthy social eating.	Social eating Individual printed weight graph
11	27	Staying on course: review progress, identify successful changes made and identify situations where participant not in control and discuss ways of overcoming barriers.	Staying on course Healthy snacking 100 Calorie portions Meal plans—Indian/minimum cooking Individual printed weight graph (Rate your plate) (Food diary) (Steps chart) (Activity diary)
12	31	Staying active: review progress; discuss additional changes made and how further activity can be added into lifestyle.	Staying active Individual printed weight graph (Activity diary) (Steps chart)
13	35	Managing stress: review progress; discuss how stress affects weight and ways to manage stress.	Day-to-day stress Individual printed weight graph (Activity diary) (Steps chart) (Rate your plate) (Food diary)
14	47	Reshaping habits: review progress since start of programme; discuss ways of continuing to lose/maintain changes in the long term.	Reshaping habits Cancer Research UK's Ten top tips Camden architecture & walking guide Travel Camden: Camden walking map Belsize walk; Jubilee Walk Individual printed weight graph Certificate of achievement (Rate your plate) (Food diary) (Steps chart) (Activity diary)